

An Announcement and Invitation to YOU

On the last weekend in September, the 26th through 28th, the Edmund Rice (1638) Association will hold its Annual Meeting.

This year the meeting will be at West Dover, Vermont, recently designated as a National Historic Area. We shall have the privilege of meeting and staying in this interesting place when it is at its best; i.e. when the leaves are in their full fall glory. Another reason for meeting here is that an ancestor of several of us (Daniel Rice[?], #656) was the first settler in this region. His grave and the family homestead may be visited on the way to Mt. Snow Ski Area.

West Dover is about 3 hours from Marlborough, Mass., and the trip back and forth from almost anyplace in Massachusetts can be made in one day. However, bed and breakfast will be available for those who wish them for either or both Friday and Saturday nights. (See pages 10 & 11 for details.)

Your committee warmly invites you to join us for a most enjoyable weekend.

Alex W. Snow,
committee chairman

Program Schedule

(Bed and breakfast will be available for either or both Friday and Saturday nights. See pages 10 & 11 for details.)

Friday, September 26:

- Arrival after supper.
- You will be met and greeted at the West Dover Inn, and room assignments explained.
- Those staying at the Deer Hill Inn may go there and check in, but are invited to return to the West Dover Inn for a congenial evening.
- We will have a "social hour" in the lounge of the West Dover Inn for all who wish to participate.

Saturday, September 27: The formal meeting will be held at the "Town Hall", an edifice built in 1825 and now used mainly for events such as this.

- 10:00 A.M. Registration
- 10:30 A.M. Directors' meeting
- 12:00 Noon. Luncheon, \$6.00.
- 1:30 P.M. Association Meeting
- 2:30 P.M. Program; A talk on the history of West Dover and on what is involved in designating National Historic Sites.

On Saturday morning, for those who are not directors, and for everyone later in the afternoon, there will be time to explore the area either on foot or by car.

In the centerfold you will find a map of the area showing back roads and footpaths which are attractive routes for exploration. In addition, we hope that Mt. Snow's gondola to the top of the mountain will be operating that weekend; it is a breathtaking experience and well worth the price.

Incidentally, some less expensive but good places to stop for supper on Friday evening are:

The Skyline Inn;

*on Rte. 9, half-way from Brattleboro to
Wilmington.*

*food and service excellent, and a
stupendous view!*

Paradise Inn; in Bennington, just below Old Bennington.

Schwinn's; just beyond the "Paradise".

authentic German cuisine.

The Old Red Mill;

*on Rte. 100 in Wilmington, about 100
yards north of the traffic light.*

*a real mill, with some of its machinery
still in place.*

Saturday evening, 6:00 P.M.

- "Pot luck" cookout at the home of Alex and Mickey Snow, on top of Windy Hill Road.
- Those of you who are able and willing are asked to bring either a salad or a dessert - something that carries easily.
- Hot food and hot and cold beverages will be provided.
- The cost for the supper will be \$4.00 per person.

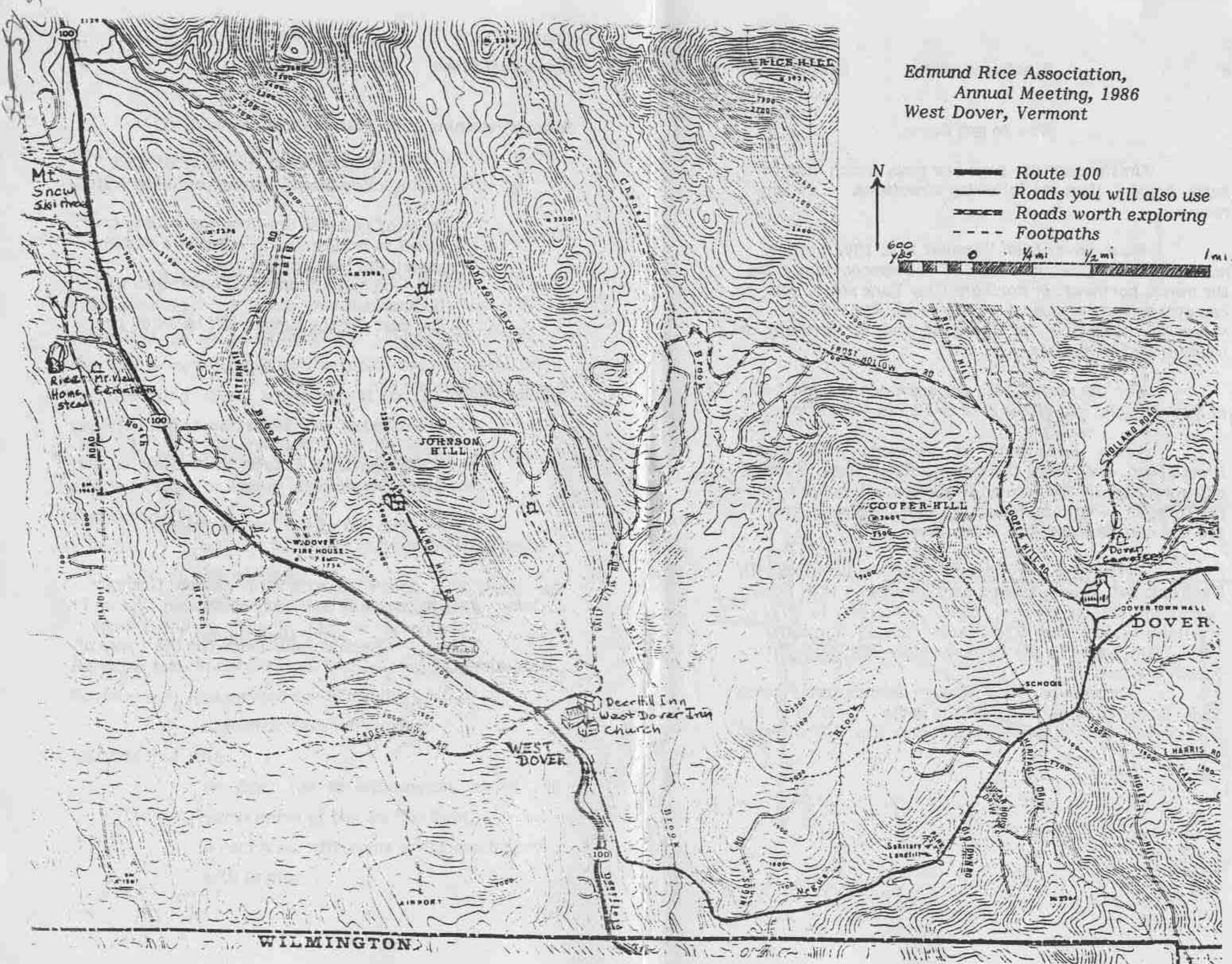
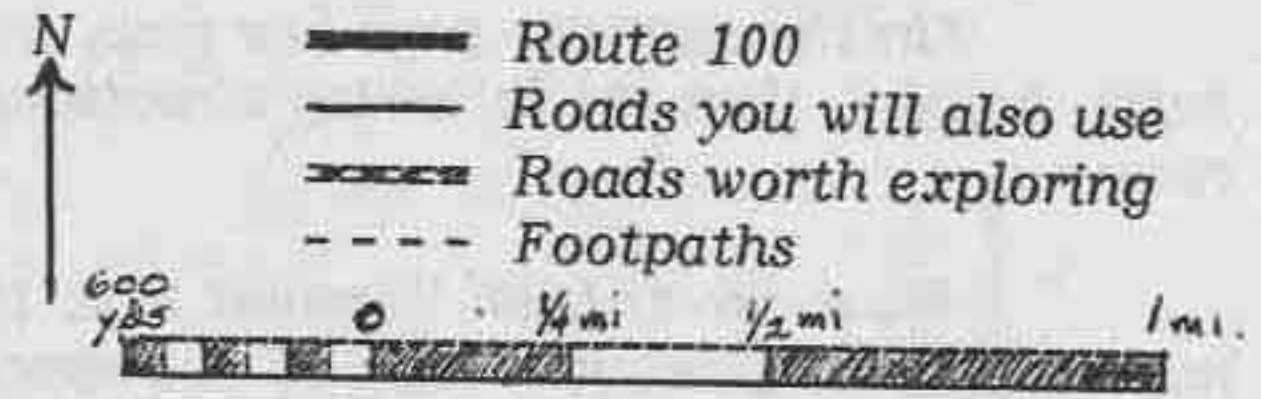
Sunday, September 28:

- Breakfast in your lodge.
- 9:00 A.M. Church service at the Congregational Church next door to the West Dover Inn.

The end of the formal program.

For those who desire to attend a Roman Catholic Church, there is Our Lady of Fatima Church in Wilmington on Rte. 9 east of the village center. Check at your lodge for the times of Masses.

Edmund Rice Association,
Annual Meeting, 1986
West Dover, Vermont



How to get there:

On the opposite page is a map, which may be more helpful than the following directions. At any rate: -

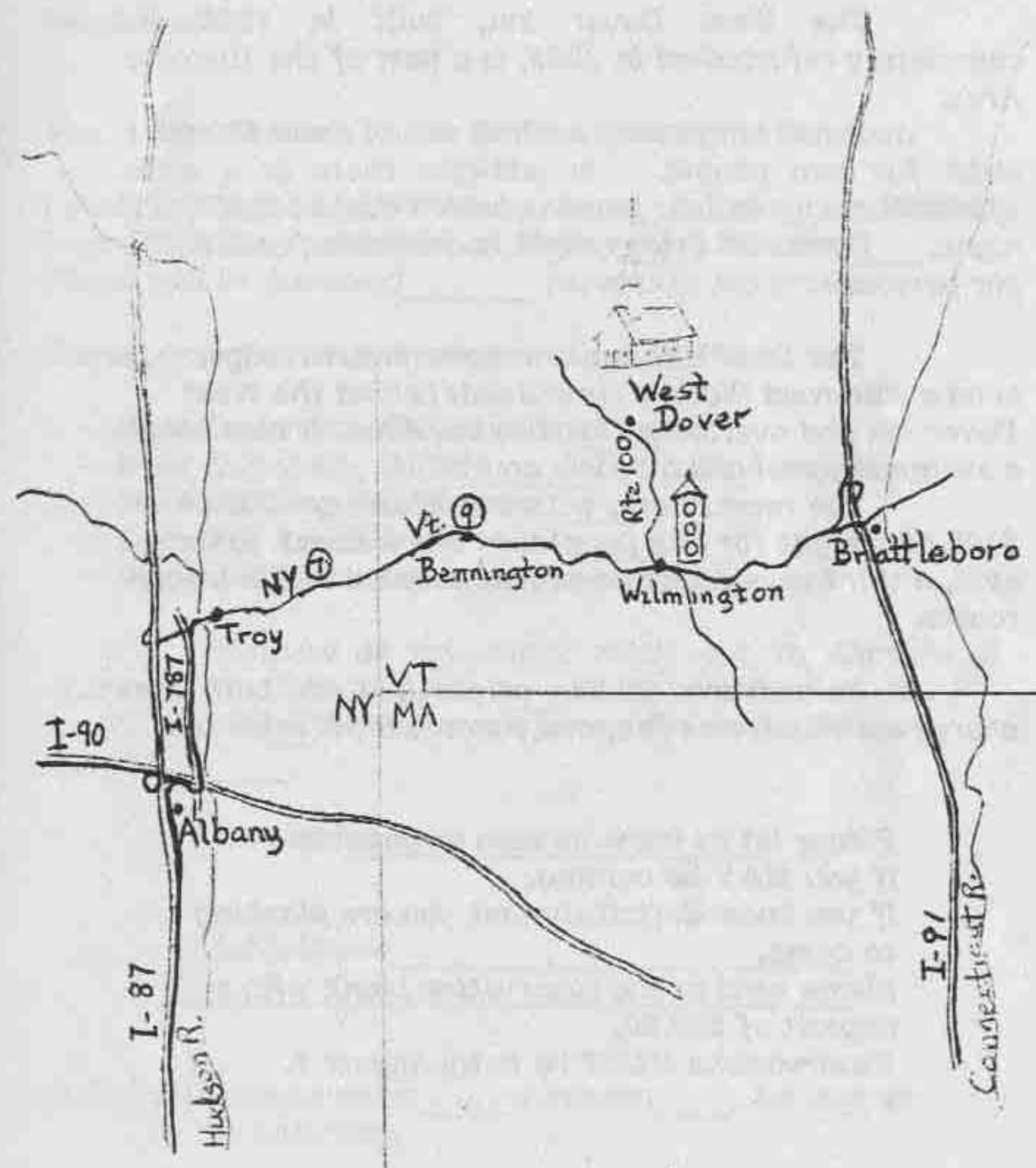
West Dover is on Vermont Rte. 100, 6 miles north of Wilmington. For those of you approaching from the north, northeast or northern New York state, you can determine the easiest way to reach Rte. 100 for yourself. Likewise for those of you in northern or western Massachusetts.

For the rest of you, the approach is from I-91 in New England and either I-87 or I-90 in New York.

From I-91, exit at Vermont exit 2 in Brattleboro, and follow the signs to Rte.9 West. Twenty miles west of Brattleboro on Rte.9 you will come to a traffic light in Wilmington. Turn right here onto Rte. 100 and continue north to West Dover.

From New York, take I-87 to the junction with I-90 (Exit 24). Take I-90 east to the junction with I-787, and turn north on this. Follow the signs to "Troy, Bennington, Vt., and Rte.7 east" (about 8 miles). Follow Rte.7 east to the Vermont state line, where it becomes Rte.9.

Continue on Rte.9 through Bennington. Twenty miles to the east you will find the same traffic light in Wilmington. Turn left here, and follow Rte. 100 to West Dover.



Accommodations and how to reserve them:

Two whole Inns have been reserved for both Friday and Saturday nights, with breakfast the next morning.

The West Dover Inn, built in 1846 and completely refurbished in 1985, is a part of the Historic Area.

It has ten rooms, each of which costs \$80.00 a night for two people. In addition there is a suite, which sleeps up to four persons, which costs \$125.00 a night. Dinner on Friday night is available for \$19.00 per person.

The Deer Hill Inn is a more modern lodge. It is on a side road (Valley View Road) behind the West Dover Inn and overlooks the Historic Area. It also boasts a swimming pool and a tennis court.

The rooms here, with breakfast, are \$90.00 or \$100.00 a night for two people. For a slight extra cost, a third person can be accommodated in the larger rooms.

In addition to the prices quoted, both Inns charge a 15% service fee, and there is a 6% sales tax.

Please let us know as soon as possible if you MAY be coming. If you know definitely that you are planning to come, please send in the reservation blank with a deposit of \$80.00.

Reservations MUST be in by August 1.

Reservation Blank

Corinne M. Snow
P.O.Box 564
West Dover, VT 05356.
Dear Mickey;

Yes, I plan to come to the Annual Meeting in Vermont.

I shall be there only for the luncheon (supper) on Saturday. I expect to stay overnight on Friday, Saturday. There will be (number) _____ persons in my group.

Please reserve the following accommodations:

- West Dover Inn, \$80.00 room _____.
- West Dover Inn, Suite _____ (\$125.00, 4 people)
- Deer Hill Inn, \$90.00 room _____.
- Deer Hill Inn, \$100.00 room _____.
- We would like a room for three people _____.

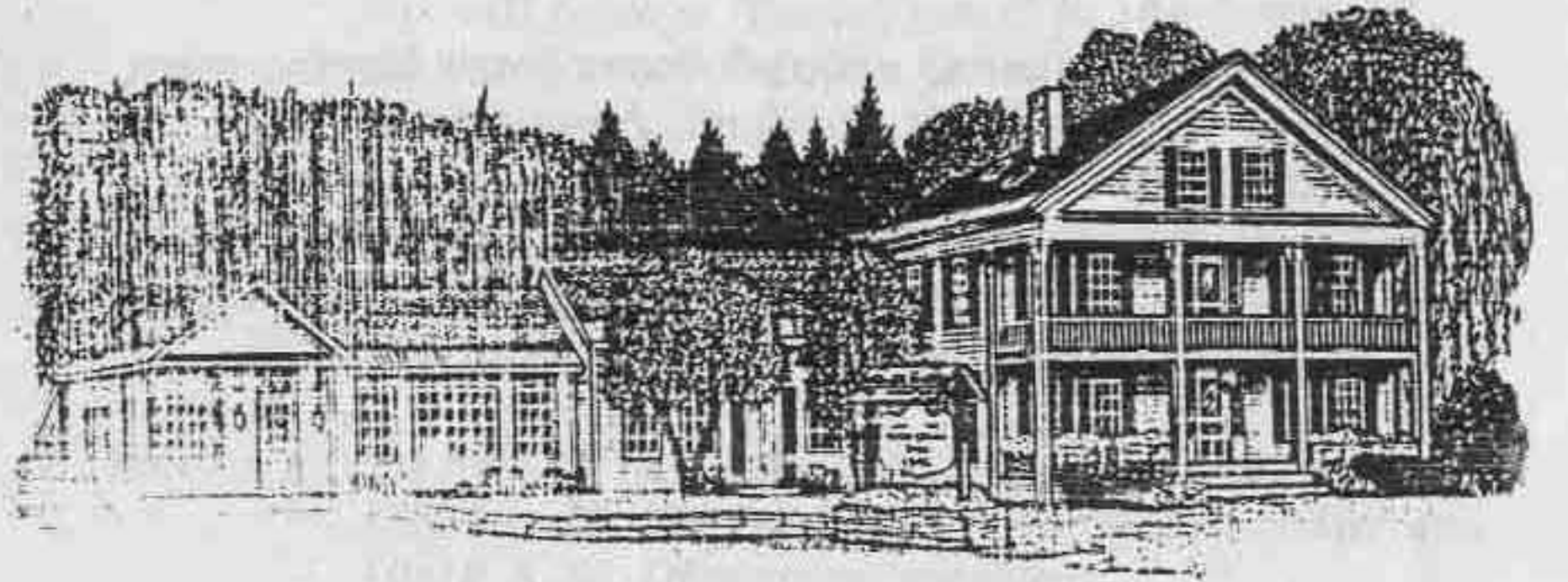
Enclosed is my check made out to Corinne M. Snow for \$80.00 plus _____ \$6.00/person for the luncheon and _____ \$4.00/person for supper on Saturday.
Total: \$ _____.

Your name _____

Your address _____

P.S. I will bring a salad _____, a dessert _____, for supper on Saturday.

Edmund Rice (1638) Association



NewsLetter;
Special Issue - 1986 Annual Meeting

EDMUND RICE (1638) ASSOCIATION

Corinne M. Snow, Editor
47 Sunset Drive,
Delmar, NY 12054

ADDRESS CORRECTION REQUESTED

Mr. and Mrs. William H. Drury
24 Buckman Drive,
Chelmsford, MA 01824