

# Edmund Rice (1638) Association Newsletter

3105 Canyon Creek Dr., Richardson, TX 75080

Vol. 72, No.4 Fall 1998

## President's Column

Dear Cousins,

The By-laws require that I appoint the following committee chairs:

Annual Meeting Planing  
Audit Committee  
Book Custodian  
Membership  
Newsletter Editor

Hope Pobst, Barre, MA  
Carl (Bob) Wessen, Grosse Point Farms, MI  
Bill Drury, Chelmsford, MA  
Bill Drury, Chelmsford, MA.  
Keith Capen Allen, Tulsa, OK

Hope Pobst has made arrangements with the Radisson Inn, Marlboro, Massachusetts for our next Rice Reunion on the 4<sup>th</sup> weekend in September, as suggested by the Board of Directors, Friday September 24 and Saturday September 25, 1999. It is necessary to start making arrangements this far ahead because, among other things, we compete with Saturday weddings! We had our 1996 reunion at this Inn. It is literally around the corner from the Marlboro Historical Society that is in the house of Peter Rice. It also only a few miles from the Edmund Rice sites in Wayland.

Our association membership has remained at 450 to 500 cousins for a number of years. Yet, we know that many thousands even millions of people are alive today with DNA derived from Edmund and Thomasine and Nancy. Should we try to reach more of them? Right now, the Association has a home page on the Internet maintained by Dennis Rice and a home page by George King on the Plantation Rices. The New England Historic Genealogical Society home page connects to that of Edmund Rice. Also, we have a full page ad in the program of the upcoming Northeast Regional Genealogical meeting in Portland, Maine and past newsletter issues have suggested giving gifts of memberships to relatives. I know at least one of our directors has given life memberships to his sons.

At the September Board meeting we discussed the pros and cons of sending postcards to Rices culled from phone directories, inviting them to join the Association. Some thought that it might be a waste of money; some thought it worth the try. One drawback is they would be probably viewed as another piece of junk mail that we all get and deplore.

My local genealogical society is quite active and I know that at least ten have Rice connections but only two of us belong to ERA. Maybe the country is saturated with genealogy!

Sincerely,  
Robert V. Rice, President

## Inside This Issue

- . Annual Reunion Highlights
- . John Douglas Rice
- . Warren E. Rice Reunion
- . Carol Jackson & Her Rice, Brigham Connections
- . Twins Upon Twins
- . Queries
- . New Members
- . Doris Barb
- . Living Treasures
- . Obituaries
- . Josephine P. Henderson
- . Rice Surname Online
- . Dorris J. Smith
- . William Vesley Mustatia, Jr.
- . Attendees at 1998 Reunion
- . Membership Report
- . Treasurer's Report
- . Source Identification Form
- . Data Collection Form
- . Annual Meeting Minutes



## Edmund Rice (1638) Association Newsletter

### Editor

Keith Capen Allen

Send articles, corrections, member news, items of interest, obituaries, queries...to:

Keith Capen Allen  
8911 S. Florence Pl.  
Tulsa, OK 74137-3333  
E-mail: [kcallen@ohm.ee.utulsa.edu](mailto:kcallen@ohm.ee.utulsa.edu)

## Membership

The Edmund Rice (1638) Association, Inc. is governed by a Board of Directors of at least five members who are elected at the annual reunion and meeting, usually held on a weekend in September.

Descendants of Edmund Rice were holding reunions as early as 1851, but it was not until 1912 that the Association was formed and officers elected. Incorporation under Massachusetts law took place in 1934.

Membership is open to anyone who claims to be a lineal descendant of Edmund Rice. Rigorous proof is not required and many members have been able to ascertain their pedigree only after access to the books and files of other members. Spouses are also eligible for membership.

Annual dues, payable September 1, are:  
Initial dues.....\$10.00  
Renewals:  
    Under 80 years of age.....\$10.00  
    Age 80 and above.....\$5.00  
Life membership.....\$100.00  
    (single payment)

**Membership:** Please send a check made out to the EDMUND RICE (1638) ASSN., INC. to:

William H. Drury  
24 Buckman Dr.  
Chelmsford MA 01824-2156

**Address Corrections:** The Post Office does NOT forward bulk mail. Please send address corrections to:

William H. Drury  
24 Buckman Dr.  
Chelmsford MA 01824-2156

-or

[wdrury@world.std.com](mailto:wdrury@world.std.com)

## Editor's Column

Cousins have responded to my request for photos! This issue is loaded with them. Many thanks to **Robbie Gries**, **Carol Jackson** and **Doyle Rice** for supporting their articles with so many interesting photos. And thank you to **Jim Rice** for sharing photos he took at the annual reunion. Carol and Doyle sent photos by mail; Robbie used the Internet to send her story and photographs. Postal service, Internet service - either way is just fine.

Also, I have included the photograph **Josephine Henderson** took of her framed Betsy Rice - John Nims line. I can't tell if the names are penned or embroidered but it is certainly is a family treasure.

Finally, let me call your attention to the forms on pages 15 & 16 that Dennis Rice has designed for non-computer users or when computer users are working without their machines. These will make it much easier for him when entering our Rice family data and also provide him with more complete documentation.

*-Keith Capen Allen*



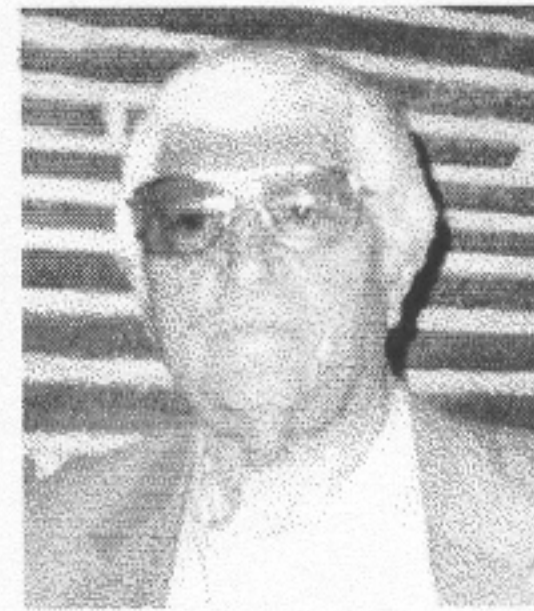
Wendy Wesen  
selling Rice tee  
shirts at the  
reunion.

## Rice Tee Shirts

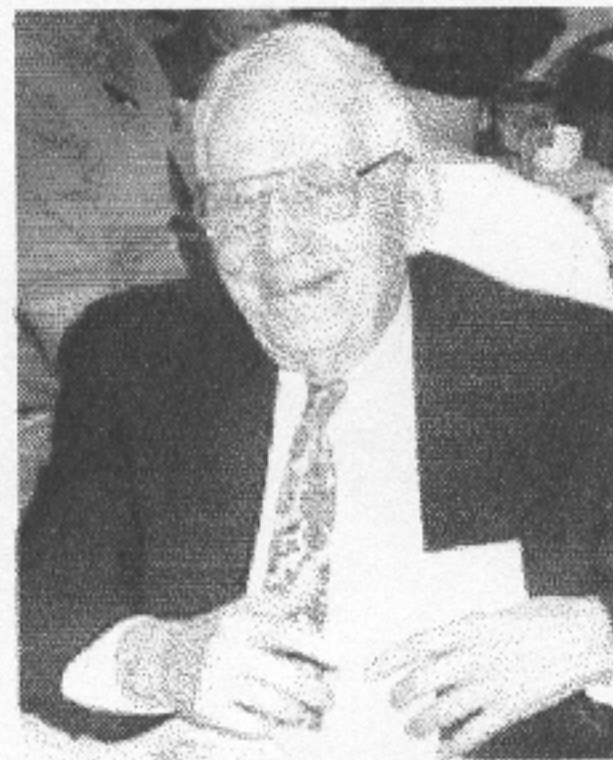
Wendy Wesen has a few Rice Association tee shirts left for sale at \$8.00 each plus postage. The tee shirts, with the Rice logo, are in sizes large or extra large, and in blue, pink or tan.

Wendy can be reached at 19834 Holiday, Grosse Point Woods, MI 48236. Tel: 313-886-7007





**Board  
Members  
at the  
Reunion**



(clockwise from top l) Bob Rice and  
George King; Jim Rice; Hope Pobst; Bob  
and Wendy Wesen; Russ and Pat Vickery;  
John Rice; Bill Drury and Ruth Brown  
- Photos by Jim Rice



## Annual Reunion Highlights

### September 18<sup>th</sup> & 19<sup>th</sup>

Friday afternoon, the 18th, about 16 cousins toured the New England Historic Genealogical Society Library in Back Bay Boston. We arrived by mini bus after a small detour when the driver made a wrong turn getting off the Massachusetts Turnpike near Copley Square. A gracious Library Volunteer showed the group through the newly renovated facilities. Then, the pleasant librarian on duty on each floor took time to answer questions and demonstrate the facilities. Several cousins signed up for membership, some bought books from the first floor store and by the time we left, the tour had stretched out an additional hour. The return to Natick was smoother because one of the library staff gave excellent directions to our driver. That evening, over 20 cousins gathered for supper in the Go Fish Restaurant in the Sherwood Mall adjacent to the Travelodge and the Crowne Plaza.

The next morning we met at the Crowne Plaza for day long activities. Coffee, juice, donuts, and pastries were set up along one wall so cousins could sit at round tables and talk. At the opposite wall was one table where Bill Drury sold the Association's books and another one where two laptop computers loaded with Dennis Rice's TMG (The Master Genealogist) database of Edmund's descendants was demonstrated. Also, both George King and Bob Rice brought their computers and were busy all morning showing cousins how to use the TMG database.

At 10:00 a.m. over a dozen cousins gathered around a large round table for the computer session. Bob Rice opened the discussion, then turned it over to George King who urged cousins to submit their databases to Dennis Rice in any form but if possible in TMG format. This database was discussed in some detail with emphasis on the importance of using officially published vital records of the towns and cities of births, marriages, and deaths for documentation. The group agreed that land records, probate, and wills also are important primary sources of documentation.



Computer Round Table led by Bob Rice (on right) and George King

### Computer Center



At noon about 60 cousins enjoyed a delicious lunch with a totally chocolate cake for dessert. After the tables were cleared, Professor George Lewis talked to us on the geography and travel of colonial Sudbury pointing out on his many slides features of the topography of the land on which Edmund Rice and his families lived. Unfortunately there was time for only a few questions before the business meeting began at 2:00 p.m.



Frances and Clayton Rice with George King  
-Photos by Jim Rice

(continued on page 5)



*(Annual Reunion, continued from page 4)*

The annual business meeting was opened by Bob Rice who called for reports from the Recording Secretary, Treasurer and Membership Director. Members voted unanimously for the slate of the Nominating Committee as presented. Richard Gariepy resigned, Hope Johnson Pobst is a new vice president, and George King moved from director to a vice president. Bob Rice gave the interim report of our English genealogist, Dr. Joanna Martin, on her search for Edmund Rice's ancestors. He showed an enlargement of old English script on a Rice deed as an example of her work. Dr. Martin has not found Edmund's parents yet but the search is not over; she is now concentrating her efforts in parishes in areas of Essex and Hertford counties. We will publish a list of the parishes with Rice baptisms, marriages and deaths, as well as maps of Suffolk County villages whose records Dr. Martin searched to help future investigations. The final report on the results of her research will appear in our newsletter.

Bob Rice reported that the member survey for annual reunion sites heavily favored late September weekends in and around Sudbury. The Board of Directors has set September 24 and 25 as a target date for next year's reunion. Members present voted, with two dissensions, to accept the Board of Directors' proposal to give \$5000.00 to the Goodnow Library of Sudbury for a repository of Edmund Rice artifacts. Bob Rice also described his search of the Harvard University Archives for papers of Edmund Rice and his descendants that had been suggested by Jim Rice. We hope to publish in the newsletter some of the archival information, mainly concerned with land sold by Henry Dunster (first president of Harvard College) to Edmund Rice.

The car caravan to Edmund's grave monument started immediately after the annual meeting after drivers received maps originally drawn by Don Rice for the Marlboro meeting. Bob Rice started to lead the string of cars going east on Rt. 9 but was forced to make a wrong turn at the first intersection! Luckily, the car immediately behind him was driven by someone familiar with the area who led the line correctly. Bob caught up with the group at the Rice stone marker on old Connecticut Path in Wayland. Everyone then drove the short distance to the site of the famous Rice spring and finally to the old north graveyard where Bob laid the wreath provided by Bill Drury. Cousins spent some time trying to find Thomasine Frost Rice's grave without any luck. She died in Marlboro and her gravesite is not known

- Bob Rice

## **John Douglas Rice**

9404 99<sup>th</sup> Ave

Westlock, Alberta, Canada T7P-2A7

E-mail: drice@west-teq.net

### Lineage:

1. Deacon Edmund Rice m. Thomasine Frost, Sudbury; Marlborough
2. Thomas Rice m. Mary King, Marlborough MA.
3. Gershom Rice m. Elizabeth Balcom, Worcester, MA.
4. Abisha Rice m. Francis Rice, Worcester, MA.
5. Micah Rice m. Silence Rice, Worcester MA. to Guilford VT.
6. Asa Rice m. Esther ?, Guilford TWP, Windham, VT.
7. Asa Noble Rice m. Sally Melendy, Guilford VT. to Canada
8. Isaac Smith Rice m. Jessie Nesbitt, Fitzroy Harbour, Ont. CA.
9. David Rice m. Mary Agnes Townsend, Ottawa, ON. CA.
10. John Joseph Stafford Rice m. Jean Townsend, Ottawa, ON. CA.
11. John Douglas Rice m. Doreen McFadden, Westlock, AB. CA.

### Additional information and comments:

I can't match the 11 cousins Bill! My lineage is not confirmed yet, but I think is authentic. I would be interested in exchanging e-mail with cousins who follow a similar lineage.



## 1998-1999 Officers

### President

Robert V. Rice  
30 Burnham Dr.  
Falmouth, MA 02540-2308  
(508) 548-4960  
E-mail: RRICE4960@aol.com

### Vice President

George W. King  
264 Nottingham Road  
Williamsburg VA 23185-5012  
E-mail: gwk@widomaker.com

### Vice President

Hope Johnson Pobst  
P.O. Box 46  
Barre, MA 01005-0046  
(978) 355-6932

### Vice President

Donald E. Rice  
4 Veronica Ln.  
Freeport, ME 04032  
(207) 865-0392  
E-mail: Donald\_Rice@onf.com

### Treasurer

William H. Drury  
24 Buckman Dr.  
Chelmsford, MA 01824-2156  
(978) 256-7469  
E-mail: wdrury@world.std.com

### Recording Secretary

Wendolin E. Weson  
19834 Holiday  
Grosse Pointe Woods, MI. 48236  
(313) 886-7007

### Historian/Information Manager

Dennis R. Rice  
3105 Canyon Creek Dr.  
Richardson, TX 75080  
(972) 680-8299  
E-mail: drrice@airmail.net  
<http://web2.airmail.net/drrice/>

## Honorary Life Members

John E. Rice  
30-5 Royal Crest Dr.  
Marlborough, MA 01752-2429

Margaret S. Rice  
206 Lion's Mouth Rd.  
Amesbury, MA 01913

## 1998-1999 Directors

Keith Capen Allen, Newsletter Editor  
8911 S. Florence Pl.  
Tulsa, OK 74137-3333  
(918) 298-2566  
E-mail: kcallen@ohm.ee.utulsa.edu

Ruth M. Brown  
7 Pheasant St.  
Sudbury, MA 01776-2230  
E-mail: brown07@ma.ultranet.com

William H. Drury, Book Custodian &  
Membership  
(See Membership, p. 2)

Frederick H. Rice, Immediate Past President  
4017 Coachmen Rd.  
Manhattan, KS 66502-8810  
(913) 537-8705  
E-mail: fhrrsbd@ksuvm.ksu.edu

Gary H. Rice  
RR1, Carleton Pl.  
Ontario, Canada K7C 3P1

James A. Rice  
123 Ledgerock Ln.  
Rochester, NY 14618  
E-mail: DadRice@aol.com

John E. Rice

Margaret S. Rice

Mr. & Mrs. Earl R. Vickery, Jr.  
258 Mountain Rd., P.O. Box 105  
Princeton, MA 01541-0105

Anita Cooper, Liaison (Non-Voting)  
Thomas McClure Rice Society  
3001 15<sup>th</sup> Ave. N.  
Texas City, TX 77590-5022  
E-mail: ajcooper@juno.com

**Membership address lists** are available  
to MEMBERS ONLY.

Please send \$1.50 to cover printing  
and postage, and specify alpha or zip code  
order to:

William H. Drury  
24 Buckman Dr.  
Chelmsford, MA 01824-2156



## An Ancestral Solution

The Smiths were proud of their family tradition. Their ancestors had come to America on the Mayflower. Their line had included Senators and Wall Street wizards.

Now they decided to compile a family history, a legacy for the children. They hired a fine author. Only one problem arose----how to handle that great-uncle who was executed in the electric chair.

The author said he could handle that chapter of history tactfully.

The book appeared. It said that "Great-uncle George occupied a chair of applied electronics at an important government institution, was attached to his position by the strongest of ties and his death came as a real shock."

(From "Stand Firm", a men's devotional)

*-Submitted by Anita Cooper*



## Warren E. Rice Reunion

June 1998, Branson, Missouri

Edmund>Thomas>Gershom>Matthais>John>William>Stephen H>Stephen>Warren Edwin Rice

In June, fifty descendants of Warren E. Rice gathered in Branson, Missouri for their 7<sup>th</sup> reunion. We meet every three years, rotating between Colorado, Indiana, California, Texas, Idaho and Missouri.

We had great fun one night putting on skits, complete with costumes, for each of our 13 generations of Rices. There were skits on the immigration of Pilgrims Edmund and Thomasine, the kidnapping of the Rice children in 1704, the American Revolution, the move to Nova Scotia, the return to Maine, the Civil War episode at Bull Run, our aunt and uncles in World War II, cousins in Viet Nam, the Hippie generation, Yuppies, Generation X, ending with the Millenium Generation children doing a little song and dance. It was not only fun and funny, but also educational as suddenly the two youngest generations "got it" and realized what a rich family history we have. We interwove into one skit our French Canadian ancestor who, arriving in 1685 to fight the Indians and the British, ended up fighting alongside Stephen Rice at Bull Run.

During the days we had our usual Canasta tournament, held in honor of our late grandmother, Canasta-playing, Grace Emma Lamirand Rice. We also took scuba diving lessons from a master diving expert, went swimming, did lots of cooking, told jokes and, most important, enjoyed everything with smiles and laughter.

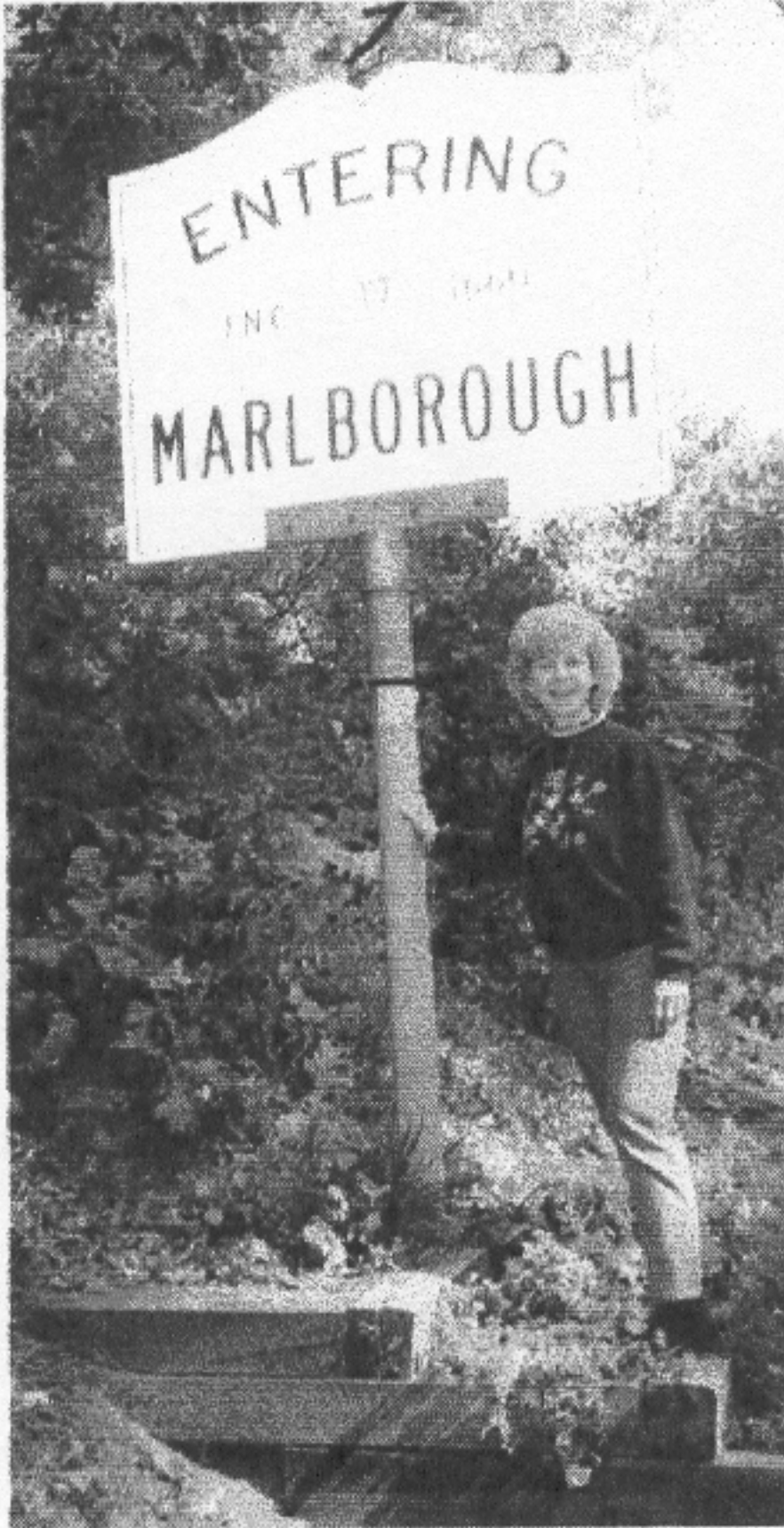
We set up a lap top computer in the corner into which members entered their family tree information. On the walls, we put maps of the early Massachusetts, Nova Scotia and Maine towns to which our ancestors migrated.

After the three fun-filled days, we said our sad farewells and started making plans for the next reunion in 2001.

*-Robbie Rice Gries*



## Visiting My Rice and Brigham Connections



Carol Jackson

When my husband, Ron and I decided to visit the Rice sites in Massachusetts, I first contacted Dennis Rice who gave me much needed help. He very kindly sent me directions to the sites and a great deal of information. He also suggested I call William Drury, which I did. Bill also gave me valuable help and said I should contact John Rice of Marlborough.

John Rice very generously offered to take us around. So, in October 1997 we started our adventure by going to his home where John showed us his extensive library of Rice publications and historical papers. What a treasure! After a wonderful morning of interesting conversation, we all started off to visit the sights. John took us to many of the Brigham homesites and cemeteries in Marlborough. I especially enjoyed Springhill cemetery in Marlborough and recognized many old family names.

We then drove to Sudbury to see Edmund Rice's grave monument. I could not believe that we were really there. On the way, we saw the Wayside Inn and Grist Mill. Oh, how I wished that we had more time! Then, it was on to Edmund Rice's homestead boulder plaque located in Wayland. This was indeed an investigation and joint effort. After many wrong turns but lots of laughter and with perseverance from John and me and patience from my driver husband, Ron, we did indeed find it. As John Rice said, "Finding that was the icing on the cake". And it truly was.

Although we only had a few days in the area, it will never be forgotten. Without the kind help from John and his knowledge, we could not have done it. Thank you, John.  
- Carol R. Jackson



Edmund Rice Grave Site

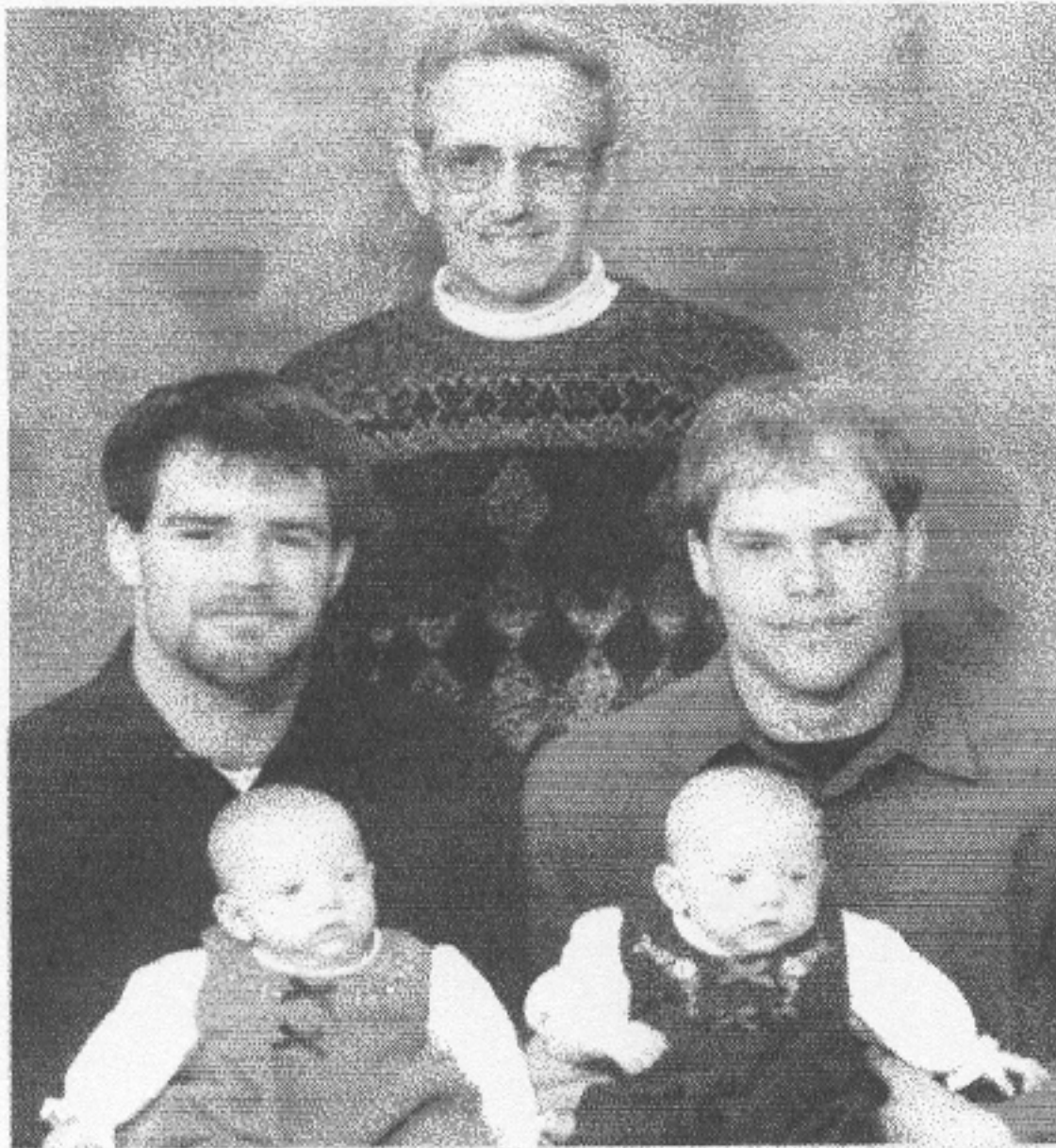


John Rice and Carol Jackson, Spring Hill Cemetery, Marlborough, October 1997



# Twins Upon Twins

- |  |  |
|--|--|
| 1. Edmund Rice   |  |
| 2. Thomas Rice   | 2. Edward Rice                               |
| 3. Thomas Rice m. Anna Rice  | 3. Anna Rice m. Thomas Rice                  |
| 4. Charles Rice  |  |
| 5. Zebulon Rice  |  |
| 6. Adam Rice   |  |
| 7. Ephraim Rice  |  |
| 8. Samuel Tainter Rice   |  |
| 9. Rollin Gordenio Rice  |  |
| 10. Lucius Manley Rice m. Elizabeth Mitchell, sisters <i>Francis &amp; Florence Mitchell</i> |  |
| 11. Floyd Manley Rice m. Lucy Ward   |  |
| 12. <i>Donald Ward Rice</i> m. Lillian Lumbert   | 12. <i>Donna Francis Rice</i> m. Donald Mull |
| 13. Doyle Rice m. Susan Sayle  | 13. Brenda Mull m. Philip Samson             |
| 14. <i>Ariel Donalda Rice &amp; Yaqirah Donna Rice</i>                                       | 14. <i>Scott &amp; Sean Samson</i>           |



Gen. 12: Donna Francis Rice and Donald Ward Rice, ages ca. 16, 1952

Gen. 12: Donald Ward Rice  
 Gen. 14: Scott Samson and Sean Samson, sons of Brenda (Mull) Samson, grandsons of Donna Francis (Rice) Mull, born Nov. 23, 1977  
 Gen. 14: Yaqirah Donna Rice and Ariel Donalda Rice, daughters of Doyle Rice, granddaughters of Donald Ward Rice, born Nov. 1, 1997

First, let me introduce you to our twin daughters, Ariel Donalda Rice and Yaqirah Donna Rice, born one minute apart on November 1, 1997. Both their first names are transliterated Hebrew names. The girls' middle names come from their grandfather, Donald Ward Rice and his twin sister, Donna Francis Rice. My aunt, Donna Francis (Rice) Mull also has twin grandchildren, Scott and Sean Samson.

Going back a few generations, Elizabeth Mitchell, the maternal grandmother of Donald Ward Rice and Donna Francis Rice had twin sisters named Francis and Florence Mitchell. Her husband, Lucius Manley Rice (my great-grandfather) had twin grandchildren and *they* both have twin grandchildren. I don't know if there is any genetic significance in all of this, but maybe a reader can offer some insight.

- Doyle Rice



## Queries

I received several letters from cousins about the announcement in the September 1998 issue of *Yankee Magazine* seeking Rice family heirs of **C. Pliney Rice**. Contact R. Bush, Sr., 233 River Reach Dr., Swansboro NC 28584 who has Mr. Rice's weekly report from the Bryant and Stratton Commercial School of Boston for 1885-6.

**Rowena W. Rice**, 2349 Piccadilly Circle, Sierra Vista AZ 85635-5078, husband's ancestor, **Robert Royce Rice** is believed to have arrived from England to Boston on the *Francis* in the 1830's. Same line as Edmund Rice?

**Helen Rice Williams**, Rt 2 Box 268, Locust Grove OK 74352-9654 seeks information on parents and siblings of **Edmond Burton Rice**, b. 1828, Henrico Co., VA and brother **Calvin Rice**, b. 1823, Henrico Co., VA. Edmond m. **Rosanna Miller**, b. 1831, WVA; their ch. **Mary Jane** m. John Morrow, **Nancy** m. Alex Morrow, **Alfaretta**, **William T.** m. Jennie Duggins, **James Calvin** m. Martha Ellis Radcliff, **Homer Arthur** m. Julia Hudson, **Elizabeth** m. Richard Tidwell. Calvin Rice m. Mary; their ch. **Thomas C.**, **Oliver M.**, **John H.**



## New Members

Diane Redkevitch	Atlanta, GA
Boyd Rice	Guthrie, OK
Becky Rice-LeAnna	Crystal, MN
Natesa K. LeAnna	Crystal, MN
Zenobia Lapeyre	Portland, OR
Joan Reed Miller	York, PA
Janet F. Ross	Tucson, AZ
George A. Brigham	Williamsburg, VA
Mrs. Kate Chiesa	Kingsford, MI
Dora A. Smith	Buffalo, NY
Joella G. Schultz	Tucson, AZ
Audrey VanWyck	Chicopee, MA
Dennis H. Rice	E. Douglas, MA

## Living Treasures

"People often ask me how to get started in genealogy. First go to a family reunion and talk to anyone older than you. I always say one gray-haired lady is worth a thousand reels of library microfilm.....Talk to her if you know her; find her if you can. At the next reunion her memories and your research can be a gift to the children whose faces hold portraits of your own family's past." (Gary D. Ford, "Find the roots of your family tree", *Southern Living*, 1997, p. 182)

Doris Barb's note about celebrating her 90<sup>th</sup> birthday at a family reunion, reminded me of this piece of wisdom. She must have many names, faces and recollections to pass on to the younger members of her family. Robbie Rice Gries tells us how skits are used to recount family history at the Warren Rice reunion and Carol Jackson writes how her trip to Edmund Rice sites would not have been nearly as meaningful without John Rice's help and his deep memory bank of Rice history.

Koreans honor an older person who has special knowledge or ability by officially designating him or her "a living treasure". Just think how fortunate we are to have so many living treasures, as Doris and John, among our relatives and Rice cousins from whom we can listen, learn and record.

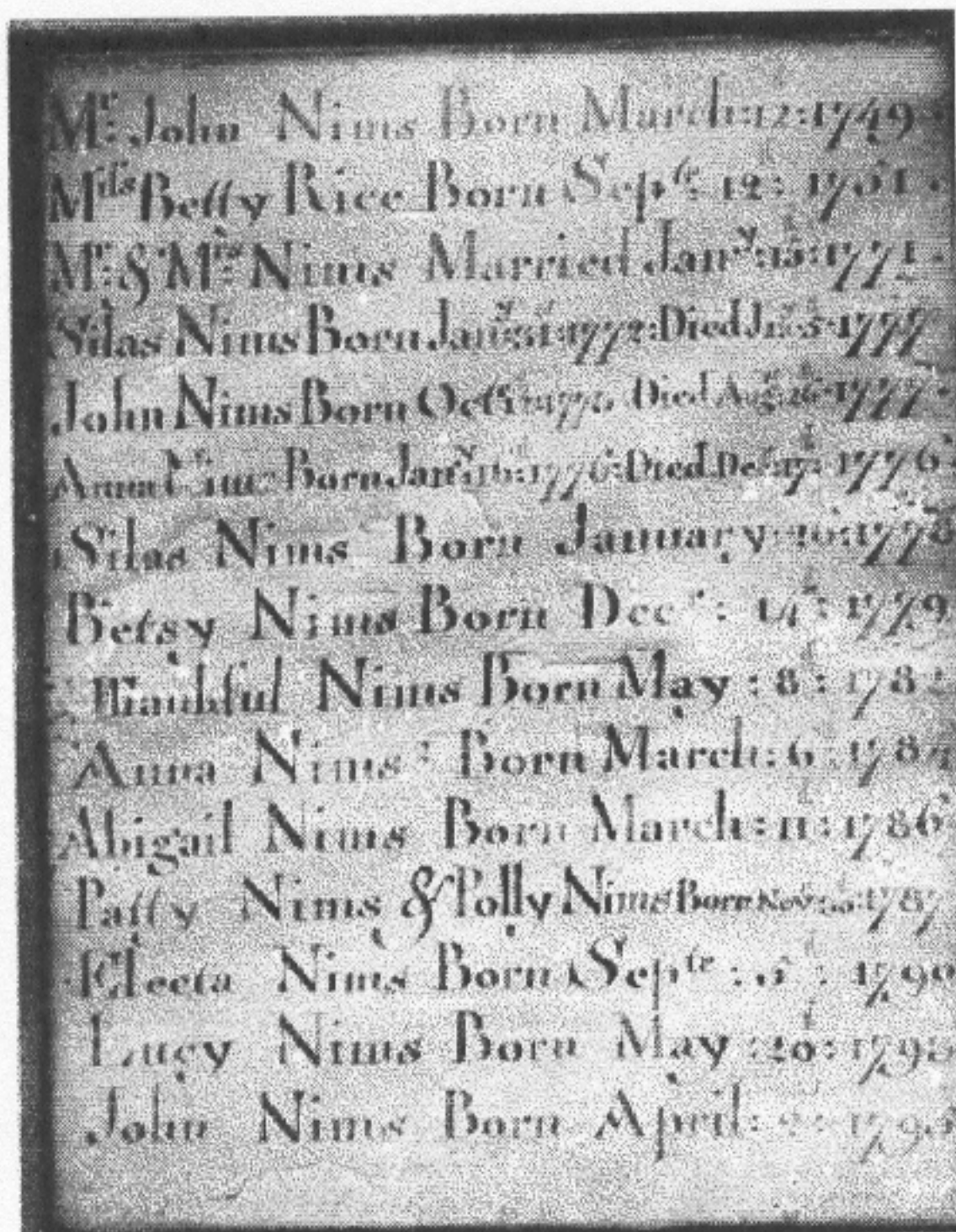
-Keith Capen Allen

## Doris Barb

720 Harvard Ave  
El Dorado KS 67042-4308

Cousin Doris Barb celebrated her 90<sup>th</sup> birthday on September 29<sup>th</sup> with a family reunion two days earlier on the 27<sup>th</sup>. Thirty five to forty family members gathered at the Red Coach restaurant in El Dorado for food and "lots of visiting". A nephew and his family came from Minneapolis. "It was a wonderful day," says Doris.





## Josephine P. Henderson

15 Sunset Circle  
Longmont CO 80501

Edmund>Thomas>Thomas>Charles>  
Solomon>Elizabeth

Ms. Henderson enclosed a photo of this interesting piece with her check for life membership. It shows her descent from **Betty Rice**, born 12 Sep 1751 who married John Nims, born 12 Mar 1749, on 15 Jan 1771.

## Obituaries

**Charles Hayward**, age 102 and a life member of the Edmund Rice Association, died April 12, 1998 in Portland, Oregon. He served in the Observation Balloon Service of the Army Signal Corps Aviation Branch on the Western Front in 1918, winning three decorations. Born in Holyoke, Massachusetts, he attended Columbia University. He leaves his wife, Ruth E. (Bailey) Hayward; a son, Robert of Seattle, Washington; two grandchildren and two great-grandchildren. Burial is at Forestdale Cemetery, Holyoke.

*(Excerpted from the Union-News, May 23, 1998)*

**Bertha M. Rice Mustatia**, died May 9, 1998 in Traverse City, Michigan. She was predeceased by her husband, William Vesley Mustatia on April 26, 1994 and leaves a son William V. Mustatia, Jr. of Grand Marais, Michigan. *(See page 12 for future details.)*

## Rice Surname Online

38.RICE. A mailing list for the discussion and sharing of information regarding the Rice surname in any place and at any time. Mailing address for postings is rice-l@rootsweb.com. To subscribe send the word "subscribe" (without the quotes) as the only text in the body of a message to rice-l-request@rootsweb.com (mail mode) or rice-d-request@rootsweb.com (digest mode).

*(From Cindy's List)*

## Robbie's Sleuthing

Dear Keith,

Am enjoying my roots trip with my daughter--fantastic, checked out our French Canadian side along the St Lawrence since 1685 and met a 4th cousin--then we headed to Nova Scotia to be into the English/Rice "Planter side" here in Annapolis, and the relatives that left Nova Scotia and landed in Robbinston Me--we stopped and saw cemetery, saw very fine home still standing (approx 1830) and got to check out old (in the attic) tax records of Stephen H. Rice -- what fun! Daughter says, that was fun, but enough genealogy--now we are on the Cabot Trail in Nova Scotia!

All the best, Robbie Rice Gries



## Dorris J. Smith

965 N 827  
Angola IN 46703

### Lineage:

1. Edmund Rice m. Thomasine Frost
2. Thomas Rice m. Mary
3. Ephraim Rice m. Hannah Livermore
4. Gershom Rice m. Elizabeth Battle
5. Ephraim Rice m. Mary Battle
6. John Rice m. Lydia Glazier
7. Otis Rice m. Sarah Ann Miller
8. Harvey Austin Rice m. Alma Reynolds
9. Gertrude Reynolds m. Emery Spade
10. Irene Spade m. Claude Sickels
11. Dorris Sickels m. DeBurl Smith

### Additional information and comments:

Dorris is retired and enjoys travel, antiques and auctions. From November to May, Dorris lives at 721 Bentsen Palm Dr, Mission TX 78572

## William Vesley Mustatia, Jr.

Box 267, Harju Rd  
Grand Marais MI 49839

Mr. Mustatia wrote a letter sharing information on where his parents chose to have their ashes spread after their deaths. It is a useful reminder that not all deceased are buried in cemeteries with grave markers.

**William Vesley Mustatia** m. 4 Apr 1936  
b. 21 May 1915, Detroit MI  
d. 26 April 1994, Blythe CA

**Bertha M. Rice**  
b. 5 Sep 1916, Gregory MI  
d. 9 May 1998, Traverse City MI

"...this letter is in reference to the deaths of my father, William Vesley Mustatia and [my mother] Bertha M. Rice-Mustatia, p. 238 of the Rice Family, supplement 2, part 2. I made promises to them that I would do what they wanted after their deaths.

In the mid-1930s, Dad was working with the C.C.C. in the Upper Peninsula of Michigan. He loved it up here in U.P. and wanted his ashes spread where a C.C.C. camp once stood overlooking the east branch of the Sucker River in Schoolcraft Co., U.P., Michigan.

And, of course, my mother wanted her ashes put with my father's....They wanted *no* markers so the only place that anyone will find where their ashes are will be... in the Rice Association or [as] recorded at the Lutheran church here in Grand Marais....

My wife, myself and the Lutheran minister are the only ones who could take anyone to the exact spot where the ashes are.

If any other information is needed or wanted, please contact me."



## Report of the Membership Secretary August 31, 1998

Activity since 9-1-97:	
New Members	39
Dropped for non-payment of dues	37
Died	2
Life members	64
Total membership	451
(includes 15 "spousal members")	

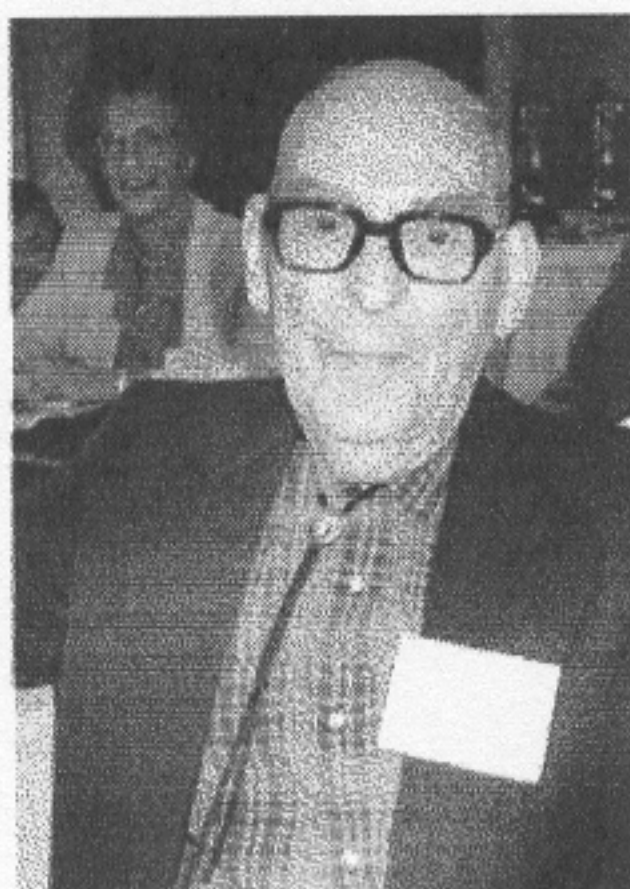
Respectfully Submitted,

William H. Drury



**Attendee Who  
Traveled the  
Farthest:**

Lynn McLaughlin of  
Kirkland, Washington



**Oldest Attendee:**

George A. Jackson,  
age 85, of  
Stonington,  
Connecticut

## Attendees at the 1998 Reunion

Jane Armbruster	MA
John Bates	NH
Adeline Beier	IL
Earl & Kathleen Bond	CT
Joe & Ruth Brown	MA
John Chandler	MA
Amy Chapman	MA
Frank & Barbara Cummings	MA
Bill & Jane Drury	MA
Robert Estabrook	NH
Rebecca Fairbank	MA
Natalie Eaton	MA
Peggy Grosser	TX
Delma Mize	TX
Susan Russell	TX
Joella & Rudy Schultz	AZ
Mr. & Mrs. Dana Hastings	MA
George & Nancy Jackson	CT
Shirley Rice Johnson	MA
Lois Kendall	MA
George & Anne King	VA
George Lewis (speaker)	MA
Lynn McLaughlin	WA
Jane McPherson	IN
Bonnie Randall	MA
Case Randall	MA
John & Hope Pobst	MA
Jeanette Pollard	MA
Linda & Boyd Rice	OK
Mr. & Mrs. Clayton Rice	MA
Donald Rice	ME
Cristina Rice	MA
James A. Rice	NY
John E. Rice	MA
Robert V. Rice	MA
Elizabeth Sander	MA
Gene & Louise Trudeau	MA
Russ & Pat Vickery	MA
Bob & Wendy Wesen	MI
Marian Wheeler	MA
Martha Wood	MA
Roger & Edna Woodbury	CT
Elaine Corbett	MA
Doyle Rice	MI
Deborah Pope	MA



## REPORT OF THE TREASURER AUGUST 31, 1998

### Checking Account:

Balance	9-1-97	\$ 2445.07
Income:		
Meetings		695.00
Publications		1165.00
Miscellaneous		412.00
Dues		<u>4395.00</u>
Total Income		6667.00

### Expenses:

Publications	1565.06
Transfer to Savings	2500.00
Meetings	1589.56
Miscellaneous	1236.44
Postage, Telephone, etc.	<u>239.82</u>
Total Expenses	7130.88

Balance	8/31/98	1981.19
---------	---------	---------

### Other Assets:

Bank Savings Account - BankBoston @ 2.02%	14679.86
Cert. of Dep. - BankBoston - due 11/1/98 @ 6.00%	12199.50
Cert. of Dep. - Massbank -due 10/3/98 @ 5.30%	23719.55
Retail Value of Books in Inventory	37117.90

<u>Total Assets</u>	8-31-98	<u>\$89698.00</u>
---------------------	---------	-------------------

Respectfully Submitted,

William H. Drury, Treasurer

## Past Presidents of the Association, 1954 to Present

1954-1955: Charles W. Rice  
 1956-1957: Edgar W. Rice (1915-1978)  
 1958-1959: Stanley I. Rice (1898-1985)  
 1960: Donald Whittemore (1894-1988)  
 1961-1963: Frederick R. Rice (1895-1973)  
 1964-1965: William H. Hoefler (1893-1977)  
 1966-1967: Ray Lowther Ellis (1901-1982)  
 1969: Jeneve R. Melvin  
 1969-1973: Col. Allen Foster Rice (1904-1984)  
 1973-1974: Margaret E. Allen  
 1974-1975: Charles W. Rice  
 1975-1976: Seaver M. Rice (1892-1988)

1976-1978: Henry E. Rice, Jr. (1907-1984)  
 1978-1980: C. Whiting Rice, Jr.  
 1980-1982: William H. Drury  
 1982-1983: Patricia MacFarland  
 1983-1985: Janice Parmenter  
 1985-1987: Margaret S. Rice  
 1987-1990: Alex W. Snow (1923-1997)  
 1990-1993: John S. Bates  
 1993-1994: Alex W. Snow (1923-1997)  
 1994-1997: Frederick H. Rice  
 1997- Robert V. Rice



# Source Identification and Data Collection Forms for Non-Computer Users

To help me when I enter the Rice family data you send me into *The Master Genealogist* database, please consider using the Source Identification form below and the Data Collection form on p. 16 that I designed. It is much easier for me to enter data when they are arranged in the same formats.

These forms are intended for non-computer users although TMG users might find them helpful when doing research in a library without a laptop.

-Dennis Rice

## Source Identification for *The Master Genealogist*

Title: \_\_\_\_\_

Author: \_\_\_\_\_ Publish Date: \_\_\_\_\_

Publisher: \_\_\_\_\_

Publisher's Address: \_\_\_\_\_

\_\_\_\_\_

\_\_\_\_\_

Series: \_\_\_\_\_ Edition: \_\_\_\_\_ Volume: \_\_\_\_\_

### Source Type:

☐ Ancestral File ☐ Journal ☐ Baptismal Record ☐ Birth Registration ☐ Book ☐ Land Records ☐ CD ROM  
☐ Cemetery Record ☐ Census-Federal ☐ Census-State ☐ Church Record ☐ DAR Records ☐ Death Certificate ☐ Email  
☐ Electronic Message ☐ Family Group Sheet ☐ Family History Center ☐ Government Document ☐ IGI ☐ Map  
☐ Marriage Record ☐ Military Record ☐ National Archives ☐ Naturalization Record ☐ Obituary ☐ Pension File  
☐ Periodical ☐ Photo ☐ Probate File ☐ Research Report ☐ Ship Passenger List ☐ Social Security Death Index ☐ Tax Roll  
☐ Town Record ☐ Video ☐ Vital Record ☐ Will

Supplemental Memo: \_\_\_\_\_

\_\_\_\_\_

Recorder: ☐ Other ☐ Person ☐ Civil ☐ Church ☐ Commercial ☐ Institutional

Medium: ☐ Other ☐ Film ☐ Book ☐ Video ☐ Audio ☐ Memory

Fidelity: ☐ Other ☐ Original ☐ Photocopy ☐ Transcript ☐ Extract

Indexed: ☐ Unknown ☐ No ☐ Yes

Repository: Address: \_\_\_\_\_

House/Street: \_\_\_\_\_

City: \_\_\_\_\_

State: \_\_\_\_\_ Zip: \_\_\_\_\_



# Data Collection for The Master Genealogist Data Entry

Individual:

Surname: \_\_\_\_\_ Given Name: \_\_\_\_\_

Date of Birth: \_\_\_\_\_ Reference Nbr: \_\_\_\_\_

Parents: \_\_\_\_\_ Gender: M F

Father: \_\_\_\_\_ Reference Nbr: \_\_\_\_\_

Mother: \_\_\_\_\_ Reference Nbr: \_\_\_\_\_

Event: \_\_\_\_\_ More Info On Back \_\_\_\_\_ ID: \_\_\_\_\_

Type: \_\_\_\_\_ Date: \_\_\_\_\_

Location: PD: \_\_\_\_\_ Source Nbr: \_\_\_\_\_

City: \_\_\_\_\_ County: \_\_\_\_\_

State: \_\_\_\_\_ Country: \_\_\_\_\_

Event: \_\_\_\_\_ More Info On Back \_\_\_\_\_ ID: \_\_\_\_\_

Type: \_\_\_\_\_ Date: \_\_\_\_\_

Location: PD: \_\_\_\_\_ Source Nbr: \_\_\_\_\_

City: \_\_\_\_\_ County: \_\_\_\_\_

State: \_\_\_\_\_ Country: \_\_\_\_\_

Event: \_\_\_\_\_ More Info On Back \_\_\_\_\_ ID: \_\_\_\_\_

Type: \_\_\_\_\_ Date: \_\_\_\_\_

Location: PD: \_\_\_\_\_ Source Nbr: \_\_\_\_\_

City: \_\_\_\_\_ County: \_\_\_\_\_

State: \_\_\_\_\_ Country: \_\_\_\_\_

Event: \_\_\_\_\_ More Info On Back \_\_\_\_\_ ID: \_\_\_\_\_

Type: \_\_\_\_\_ Date: \_\_\_\_\_

Location: PD: \_\_\_\_\_ Source Nbr: \_\_\_\_\_

City: \_\_\_\_\_ County: \_\_\_\_\_

State: \_\_\_\_\_ Country: \_\_\_\_\_

Event: \_\_\_\_\_ More Info On Back \_\_\_\_\_ ID: \_\_\_\_\_

Type: \_\_\_\_\_ Date: \_\_\_\_\_

Location: PD: \_\_\_\_\_ Source Nbr: \_\_\_\_\_

City: \_\_\_\_\_ County: \_\_\_\_\_

State: \_\_\_\_\_ Country: \_\_\_\_\_

Event: \_\_\_\_\_ More Info On Back \_\_\_\_\_ ID: \_\_\_\_\_

Type: \_\_\_\_\_ Date: \_\_\_\_\_

Location: PD: \_\_\_\_\_ Source Nbr: \_\_\_\_\_

City: \_\_\_\_\_ County: \_\_\_\_\_

State: \_\_\_\_\_ Country: \_\_\_\_\_

Example of Type: Birth, Education, Marriage, Child, Death, Will, Military Service, etc.  
Complete a Source Information Sheet for all sources, and reference as appropriate to each event.  
Please provide more detail of event on back of sheet, giving insight of event to the individual.

PD: Place Detail

Originator of Information: \_\_\_\_\_



## Minutes of the Annual Meeting of the Edmund Rice (1638) Association, Inc. Held September 19, 1998 in the Crowne Plaza Hotel, Natick, Massachusetts

The annual meeting of the Edmund Rice (1638) Association, Inc. was brought to order by president Robert Rice at 1 p.m. September 19, 1998 in the Crowne Plaza Hotel in Natick, Massachusetts. The start of the annual meeting followed a morning that included a continental breakfast, a social time for cousins to renew friendships and a sit-down luncheon at 12 noon. Tee shirts with the Rice logo were available for purchase throughout the day. The meeting began with a talk by George W. Lewis entitled "Bridges and Boundaries: Travel in the Sudbury Valley from the time of Edmund Rice", in which he discussed the bridges across the Sudbury River giving the history of Sudbury and the way it expanded over the centuries. Following this well-received talk, president Robert Rice brought the business meeting to order at 2:10 p.m.

The reading of the minutes of last year's meeting were dispensed with.

Bill Drury gave the treasurer's report and the book report, including the number of books still in inventory. He also reported the membership of the association. There are presently 451 members of the association, including 15 spousal members and 64 life members.

The auditor reported that he had reviewed the treasurer's books and found them to be in order.

Next year's annual meeting will be held September 24 and 25, 1999. The location will be announced in the next newsletter. The autumn board meeting will be held Friday, September 23, 1999, location and time to be announced.

A report of Dr. Martin, professional genealogist in England was read.

Members who are known to have passed away in the past year were named, Charles Haywood and Bertha Mustatia.

Gifts were given to the oldest attendee, George Jackson who is 85 years old; the attendee who traveled the farthest to come to the meeting, Lynn McLaughlin from Kirkland, Washington; and the youngest attendee, Kate Goodnow who is 16 years old.

A motion was made and passed "to allow the board of directors to donate up to \$5,000 to the new Sudbury Public Library for the storage and care of Edmund Rice Association Archives."

President Robert Rice reported that he had made arrangements with Harvard University to have copies made of items, which the university has stored, pertaining to Henry Dunster, first president of Harvard University, but also pertaining to Edmund Rice.

The nomination of officers of the Edmund Rice (1638) Association for next year was made and unanimously approved. The elected officers are:

President	Robert V. Rice
Vice Presidents	Donald E. Rice
	George King
	Hope Pobst
Treasurer	William H. Drury
Recording Secretary	Wendolin E. Wesen
Historian/Information Manager	Dennis R. Rice
Board Members	Keith Capen Allen, Newsletter Editor
	Ruth M. Brown
	Fred H. Rice
	Gary Rice
	James Rice
	John E. Rice
	Margaret Rice
	Mr. & Mrs. Earl Vickery
	Anita Cooper, Liaison, William McClure Rice Society

A life membership was extended to Corine Snow for her years of devotion and service to the association, and it was noted that her husband, Alex, now deceased, contributed many years of service including several years as president.

The meeting was adjourned at 3:05 p.m. Following the general business meeting there was a tour of Wayland, including the memorial plaque to Edmund Rice, his original home site and laying a wreath at his tombstone. About 10 cars of attendees participated.

Respectfully submitted,

Wendolin E. Wesen  
Corresponding Secretary