

**Edmund Rice (1638) Assoc., Inc.**  
416 Shirley Place  
Valdosta, GA 31605-6422  
**Return Postage Guarantee**

NONPROFIT ORG  
US POSTAGE  
PAID  
VALDOSTA GA  
PERMIT NO. 127

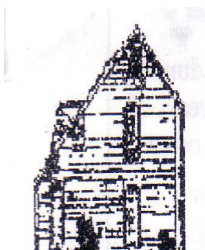
## **EDMUND RICE (1638) ASSOCIATION NEWSLETTER**

Published Winter, Spring, Summer and Fall by the Edmund Rice (1638) Association  
416 Shirley Place Valdosta, GA 31605-6422

---

The Edmund Rice (1638) Association, Inc. 24 Buckman Dr Chelmsford, MA 01824, was established in 1851 and incorporated in 1934 to encourage antiquarian, genealogical, and historical research concerning the ancestors and descendants of Edmund Rice who settled in Sudbury, Massachusetts in 1638, and to promote fellowship among its members and friends.

The Association is an educational, non-profit organization recognized under section 501(c) (3) of the Internal Revenue Code.



# ***Edmund Rice (1638) Association Newsletter***

416 Shirley Place, Valdosta, GA 31605-6422 Vol. 83, No.4 Fall 2009

The Edmund Rice Association publishes the newsletter four times a year: winter, spring, summer and fall. The summer newsletter is devoted to the annual September reunion and includes both a description of the program and registration information. The other three newsletters include information of more general interest to our members. We invite cousins to submit their genealogical information, newsletter corrections, items of interest, family articles and pictures, obituaries and queries. Send them to our newsletter editor: Susan Berger at [editor@edmund-rice.org](mailto:editor@edmund-rice.org)

## **President's Column**

Greetings, cousins!

Today, I am thinking about reunions. In addition to the annual meeting of the ERA a few weeks ago, I recently attended my 40th high school reunion in Wilmington, Delaware. It might be amusing to compare the two events. Each one was two days, a Friday and a Saturday. Each one had a tour (ERA a bus tour of places that our ancestors frequented long ago, the classmates a tour of places that we ourselves had frequented -- sometimes it seems a long time ago, and sometimes "just yesterday"). Incidentally, or perhaps not so incidentally, each one was a lot of fun. Each one had historical presentations (even though the school district where I grew up consists mostly of suburban developments built after World War II, there was a "Mount Pleasant School" as far back as the 1830's). Each one had a potential audience of several hundred people, plus spouses, and each one had far fewer than that in attendance, but each one had people coming from as far away as the west coast. At each one, I had some interesting genealogical discussions (I learned that one person I had known at school was in fact a ninth cousin once removed). Each one had a dedicated crew of organizers who made the event possible. Each one had name tags for the participants because the attendees would in some cases not have the least idea who those other people were. I guess I needn't point out that some of my classmates have changed a lot in 40 years while others don't seem to have changed a bit. I fall somewhere in the middle, mostly because I didn't have a beard in high school.

Speaking of changing, one interesting touch about the school reunion was the inclusion of pictures on the name tags -- the pictures, however, were photocopies from the 1969 school yearbook, helping to bridge the gap between our memories of the past and the realities of today. We don't need anything like that in the ERA, of course, because we hold our reunions every year. Perhaps the biggest difference between the two gatherings was the contrast in age spreads. The classmates were all within a year or so of being the same age, while the ERA attendees spanned decades. In fact, the youngest person at the latest ERA reunion was not even born when the Class of 1969 was let loose upon the world, while the oldest has a daughter and a son who actually were in that class, and I have it on good authority that they also had a class reunion at the very same time as mine.

Among the other differences between the two events: the ERA reunion included a questionnaire about what the attendees liked about that meeting and wanted for the next one, while the class reunion asked for just two things,

## **Inside This Issue**

<b>Editor's Column</b>	<b>p. 3</b>
<b>Officers/Directors</b>	<b>p. 4</b>
<b>In Memory of</b>	<b>p. 5</b>
<b>In Celebration</b>	<b>p. 5</b>
<b>New Members</b>	<b>p. 6</b>
<b>ERA Database</b>	<b>p. 6</b>
<b>DNA Project</b>	<b>p. 7</b>
<b>The Family Thicket</b>	<b>p. 8</b>
<b>Reunion Photos</b>	<b>p. 10</b>
<b>Queries</b>	<b>p. 17</b>
<b>Books for Sale</b>	<b>p. 22</b>

name and email address. Also, there was dancing at the class reunion, but not at the ERA meeting (or at least not at any of the official events). As it happens, no one suggested dancing in the ERA questionnaire, and so I guess we won't have that next year, either.

That reminds me. Now is the time when plans will be set for next year's reunion. Anyone who has suggestions of things to do or places to go should drop me or George Rice a line. One thing we are planning to do differently next year is to add modern technology to the process of selecting the winner of the door prize for longest distance traveled. Instead of relying on the general opinion of those in attendance, we will calculate the precise distances in air miles (not road miles, since those who travel the farthest will undoubtedly come by air).

*--John Chandler*

I've had requests to reprint an article that appeared in my Editor's Column in the summer newsletter.

Sometimes cousins ask how long our association has existed, so I thought I'd reprint the following article I found in a 1968 newsletter.

**5 Sept 1851** – First known meeting of the Rice family at Wayland, Deacon Edmund Rice of Brighton, moderator. Scriptures read by Edward Rice of Wayland and an address by Abner Rice of Woburn.

**2 Sept 1852** – Letter written by Abner Rice of Natick, dated Aug 1852, stating the annual meeting would be held on Sept 2<sup>nd</sup>.

**27 August 1856** – Letter signed by Marshall P. Rice evidently for the newspapers, calling attention to the annual meeting to be held in the usual place, a grove on the Rice homestead in Wayland.

**7 October 1903** – Dedication of a marker at the site of Capt. Jonas Rice, first permanent settler of Worcester, MA. After the ceremonies the Rice family met in a room at the Worcester Society of Antiquity.

**13 Sept 1913** – Descendants met in Wayland Unitarian Church. At that time 150 family members unveiled the Edmund Rice Memorial marker on the Connecticut Path.

**29 Aug 1914** – Mrs. Nellie Rice Fiske was elected president of the Association. At this time a state marker, designed by Arthur Wallace Rice was placed in the old cemetery at Wayland honoring Deacon Edmund Rice.

**10 January 1934** – Rice Association was incorporated and we hold a charter from the state of Massachusetts under the name of Edmund Rice (1638) Association, Inc.

At that time our membership was limited to New England. Now, in July 2009, our membership has grown from only New England to cousins in almost every US State, Canada, the United Kingdom and Spain.

*-- Susan Berger*

## Edmund Rice (1638) Association Newsletter

Send articles, corrections, member news, items of interest,  
obituaries, queries, etc. to the newsletter editor:

Susan R. Berger

email: [editor@edmund-rice.org](mailto:editor@edmund-rice.org)

### Membership

The Edmund Rice (1638) Association, Inc. is governed by a Board of Directors, of at least five members, elected at the annual reunion and meeting, usually held on a weekend in September.

Descendants of Edmund Rice were holding reunions as early as 1851, but it was not until 1912 that the Association was formed and officers elected. Incorporation under Massachusetts law took place in 1934.

Membership is open to anyone who claims to be a lineal descendant of Edmund Rice. Rigorous proof is not required and many members have been able to ascertain their pedigree only after access to the books and files of other members. Spouses are also eligible for membership.

Annual dues, payable *September 1*, are:

Initial dues.....\$ 15.00

Renewals:

Under 80 years of age.....\$ 15.00

Age 80 and above.....\$ 5.00

Life membership.....\$200.00  
(single payment)

**Checks To:** EDMUND RICE (1638) ASSN., INC.

#### Membership Mailing Address:

Edmund Rice (1638) Association, Inc.  
c/o Susan R. Berger  
416 Shirley Place  
Valdosta, GA 31605

#### Membership Email Address:

[srberger@bellsouth.net](mailto:srberger@bellsouth.net)

#### Address Corrections:

The Post Office does NOT forward bulk mail. The return postage and re-mailing postage costs the Association nearly \$1.50 per copy.

*Your help with this is greatly appreciated.*

### EDITOR'S COLUMN

This year was the first time I was able to go a Rice reunion. It was so much fun meeting and visiting with everyone.

There were approximately 26 cousins and guests on the Friday Bus Tour. George Rice did an outstanding job planning the reunion the bus tour and explaining the landmarks and Rice sites we were seeing.

There were about 50 cousins and their guests, at the Friday night dinner. Presentations given by Michael Rice, George Rice and our speaker Diane Rapaport at our Saturday afternoon meeting were excellent.

I hope you enjoy this reunion issue as much as I enjoyed creating it.

Thanks to Edna Woodbury who donated some items from past reunions she attended.

This memorabilia will be treasured by the association and shared with many generations to come....

Susan Berger

### Website

**Edmund Rice (1638) Association**

[info@edmund-rice.org](mailto:info@edmund-rice.org)

**[www.edmund-rice.org](http://www.edmund-rice.org)**



## 2009 -2010 Officers

**President, John F. Chandler**  
183 Prospect Hill Rd., Harvard, MA 01451  
[John.chandler@alum.mit.edu](mailto:John.chandler@alum.mit.edu)

**Vice President, George L. Rice**  
940 Old Post Rd., Cotuit, MA 02635  
(508) 428-3243  
[Grice99@hotmail.com](mailto:Grice99@hotmail.com)

**Treasurer, Michael A. Rice**  
201 Old Post Road, Wakefield, RI 02879  
[rice@uri.edu](mailto:rice@uri.edu)

**Historian, George W. King**  
264 Nottingham Road, Williamsburg, VA  
23185-5012  
[Gking5@cox.net](mailto:Gking5@cox.net)

**Membership, Susan R. Berger**  
416 Shirley Place, Valdosta, GA 31605  
229-249-8828  
[srberger@bellsouth.net](mailto:srberger@bellsouth.net)

**Book Custodian, Michael A. Rice**  
(see above) [rice@uri.edu](mailto:rice@uri.edu)

**Recording Secretary, Dana M. Hastings**  
10 Longwood Drive #111  
Westwood, MA 02090  
[danamhasti@comcast.net](mailto:danamhasti@comcast.net)

**DNA Project, Robert V. Rice**  
12A Woodview Drive, Falmouth, MA 02540  
(508) 548-4960  
[rvrbarre@verizon.net](mailto:rvrbarre@verizon.net)

## 2009 - 2010 Directors

**Newsletter Editor, Susan R. Berger**  
[editor@edmund-rice.org](mailto:editor@edmund-rice.org)

**Kathleen H. Bond**, [bond\\_k@mitchell.edu](mailto:bond_k@mitchell.edu)

**William H. Drury**, [wdrury@alum.mit.edu](mailto:wdrury@alum.mit.edu)

**Beth McAleer**, [mcaleerb@bc.edu](mailto:mcaleerb@bc.edu)

**Colonel Gary H. Rice, Ret.**, [gehr@ripnet.com](mailto:gehr@ripnet.com)

**Timothy L. Sanford**,  
[Timothy.l.sanford@sympatico.ca](mailto:Timothy.l.sanford@sympatico.ca)

**Wendolin E. Wesen**, [crwesen@aol.com](mailto:crwesen@aol.com)

**Linda J. Wilson**, [bluejeanne1@verizon.net](mailto:bluejeanne1@verizon.net)

**Pamela Speciale**, [pamela.speciale@gmail.com](mailto:pamela.speciale@gmail.com)

**Ruth M. Brown**, *DIRECTOR EMERITA*

## Past Presidents

1960-1963	Frederick R. Rice
1964-1965	William H. Hoefler
1966-1967	Ray Lowther Ellis
1968	Edgar W. Rice
1969	Erwin R. McLaughlin
1970-1973	Col. Allen F. Rice
1974	Margaret E. Allen
1975	Charles W. Rice
1976	Seaver M. Rice
1977-1978	Henry E. Rice, Jr.
1979-1980	C. Whiting Rice
1981-1982	William H. Drury
1983	Patricia P. MacFarland
1984-1985	Janice R. Parmenter
1986-1987	Margaret S. Rice
1988-1989	Alex W. Snow
1990-1993	John S. Bates
1994	Alex W. Snow
1995-1997	Frederick H. Rice
1998-2006	Dr. Robert V. Rice

## Memorial Gifts

Consider donating to the Edmund Rice Association in memory of a loved one.

Rudy & Joella Schultz made a donation in memory of the late Peggy Rice Grosser.

## IN MEMORY OF

Jean O'Hara, Richard Monighetti and Melinda Crawford's father passed away earlier this year.

James Wadsworth Rice of Hudson, New Hampshire, age 47, passed away on July 7, 2009.  
His parents are Abbott and Annie Rice.

Catherine P. Royce and Marjorie Gibson passed away on March 30, 2009.

Henry Charles Trombley Jr. 78 of Saratoga Springs, NY passed away Saturday February 28, 2009. Henry had once been Treasurer and was on the Board of Directors for the Edmund Rice Association for many years.

## IN CELEBRATION

In the 2009 summer newsletter, we began a new tradition of including all cousins whose birthdays fell in the months since the last newsletter had been published. Because this was new, I included all cousins whose birthdays were January thru June. This newsletter will include everyone whose birthday is July thru September. Please keep in mind I can only your birthday if you include your birthday on your membership form.

*Please join me in wishing the following cousins a Happy Birthday!*

“HAPPY BIRTHDAY TO YOU” – “HAPPY BIRTHDAY DEAR COUSINS”  
WE HOPE YOU HAVE MANY MORE

### JULY

Marlea Warren of St. Louis Park, MO; Rodger Rice of Grand Rapids, MI; Priscilla Craig of Phoenix, AZ; Evelyn Jensen of Ogden, IA; Robert Cave-Browne-Cave of Langley BC, Canada; Linda Waterkotte of Quincy, IL; Winona Flood of Burlington, NC; Peter Meigs of Danville, NH; Dr. A. David Woods of Malaga Spain; Carl Fritsche of Eatontown, NJ; Winston Rice of Norwell, MA; John Chandler of Harvard, MA; George McLaughlin of Fairbanks, AK; Dorothy Wells of Baltimore, MD; Max Rice of Shoreline, WA; Abbott Rice of Hudson, MA.

### AUGUST

Katherine Brown of Midlothian, VA; James Rice of North Ridgeville, OH; Gerald Rice of Windsor, VT; Timothy Sanford of Toronto ON, Canada; Lois Hess of Ft. Wayne, IN; William Rice of Norwell, MA; Donald Rice of Concord, NH; Katherine James of Springfield, IL; Katrina Rice-Schmidt of Ojai, CA; Dr. Robert Rice of Falmouth, MA; William Wesen of Apple Valley, MN; Elizabeth Hicks of Wichita, KS; Judith Atkinson of Westphalia, MI; Earl Vickery of Fitchburg, MA; Virginia Butz of Santa Cruz, CA; Anita Cooper of Houston, TX; John Newton of East Aurora, NY; Linwood Erskine Jr. of Paxton, MA.

### SEPTEMBER

Alice Wareham of Saranac Lake, NY; Roy Powers of Wilbraham, MA; Marlene Jansen of Ormond Beach, FL; Donald Timmons of Harrisonburg, VA; Betty Gilmore of Wayne, NJ; Jeffrey Smythe of Freeburg, IL; Ruth Gries of Lakewood, CO; Lewis Hawthorne of Olympia, WA; Barbara Neimann of Willowstreet, PA; Alice Pierce of Lexington, MA; Alan Rice of Tuthill, SD; Thomas Walker of Kenai, AK; Daniel Williams of Houston, TX; Mary Austin of Houston, TX; Elizabeth sander of Plymouth, MA; John Campbell of Dollard-des-Ormeaux BC, Canada; Susan Berger of Valdosta, GA; Suzy Kadiff of Watertown, MA.

## **NEW LIFE MEMBERS**

William Rice Sr  
Barbara Carlson

## **NEW MEMBERS**

Robert Lehr of Grand Prairie, TX  
Patricia Stitham of Clinton, AR  
Dale C Gunn of Hudson, MA  
Karen Bye of Lino Lakes, MN  
Dale Rice of Williams, OR  
Laurel Rice of Windsor, CA  
Joni Fisher of Alamo, CA  
Anthony Chamberlain of Naperville, IL  
Donald Peirce of Sudbury MA  
Brian C Rice of New York, NY  
Daphne T Stevens of Fiskdale, MA  
Michael Kearney of Wayne, PA

Donna Murphy of The Villages, FL  
Carol Kosicki of Clinton, AR  
David Bohrman of Ben Lomand, CA  
Robert Riger of New York, NY  
George Rice of Philadelphia, PA  
Robert Rice of East Moriches, NY  
Betty Adams of Stayton, OR  
Earl Rice of DeRidder, LA  
Mary Rice Harris of San Diego, CA  
Alyce H Rogers of Medina, WA  
Robin Bradley of Little Rock, AR

**Hope to see you all at a future reunion!**

## **MEMBERS MAKING ADDITIONAL DONATIONS**

Alice Wareham	Robert Rice	Marian Wheeler
Mary Austin	Dorothy L Rice Miller	Edna Woodbury
Joseph Comstock	George Rice	William Rice
Beth McAleer	David Staublin	Michael Willer
Pamela Speciale	Rosemary Rice Bailey	Keith Allen
Martha Woods	Elizabeth Johnson	Joanne Rice
Dana Hastings	Reginald W Rice	Jean Danielson
Donald P Peirce	Marilyn Rice Nee	June Perry
Marilyn Skinner	Mary Soliday	Bill Deming
Patricia MacFarland	Lois Hess	LaRain Hudson
John W Rice III		

## **WEBMASTER**

Kathleen Hahn has volunteered to assist George King with website updates. Please join me in thanking her for taking on this very important task.

## **The ERA Database**

Our computer database has been and will continue to be essential for DNA studies for Edmund Rice descendants and the descendants of other early Sudbury families. We need your continuing support. If you have not submitted your family line to us, why wait any longer? Have questions? Contact our Historian George King at: *gking5 @ cox.net*

## **Nine-Generation Rice Database Available on CD**

Your Board of Directors (BoD) agreed that we would offer the nine-generation report and database to our members (only). The BoD approved a charge of \$10 plus \$5 shipping & handling

for a CD-ROM containing both documents. Please order from the Treasurer by sending a check or money order for \$15 to him with a request for the CD-ROM.

The BoD placed three caveats on the distribution of these documents:

- 1) The information is copyrighted by the Edmund Rice (1638) Association and is restricted to the personal use of association members.
- 2) The CDs will be available only to Association members who agree to its terms of use.
- 3) The Association master database is an ongoing effort. This CD-ROM represents our database effort as of September 2009. If you find any documentable errors, please let us know!

## **Research and Submit Your “Umbilical Lineage”**

The women whom Rice men married have contributed to our genetic heritage in equal proportion, and also have a very special set of genetic markers passed down to us today.

Mitochondrial DNA (mtDNA) is passed solely by mothers to their children, both to males and females. However, only mothers can pass mtDNA: fathers only pass their YDNA to their sons.

Research your lineage through your mother->grandmother->great-grandmother and onward, and submit it to the ERA. Consider having your mtDNA tested, too!

Contact the DNA Project coordinator at [rvrbarre@verizon.net](mailto:rvrbarre@verizon.net) for more information.

## **Descendants of Edmund Rice Outside of North America?**

The ERA YDNA Project continues to attract Edmund's descendants as well as descendants of other Rices. So far we have not found any living Rices outside of North America that have the haplotype of any Rice families here. This has been a disappointment to say the least. In all our innocence some of us thought that with the help of DNA we would surely make connections to English branches of the Edmund Rice greater family when we started YDNA analyses in 2000. We now have had 225 living male Rices analyzed for their YDNA.

We have had three Rice males submit their DNA from outside America but none turned out to have Edmund's Haplotype or set of genetic markers that have been deduced to be those of Edmund or any other Rice family. They have been unique.

The first such DNA submission from a Rice male living today in England had an enticing family tradition of using Edmund as their middle given name but his YDNA did not come close to matching that of our Edmund. The next one did not come from England but from Australia. That Rice family had a detailed genealogy showing an origin fairly close to Berkhamstead, England where we know Edmund's family lived for about ten years before coming over here. But upon analysis that Rice male's YDNA was far removed from Edmund's reconstituted haplotype.

About Christmas time last year we got a request from another Rice male who had a fairly detailed genealogy showing that his Rice family had had a Rice male who at least lived in Wales while he was Rector of an Anglican church there. This was intriguing because for years the tradition had been that Rice

was a Welsh name although Edmund Rice was a Puritan not an Anglican. More importantly their conventional genealogy went back to 1650. We even arranged an expedited analysis with FTDNA but again the result just gave us another English Rice family haplotype separate from all other Rices.

Over the nine years of our DNA project a number of Rices have told us that they thought their Rice ancestor came from Ireland, Scotland, Wales, or Germany, as well as from England but none had any documented genealogy showing this to be true. If they followed through by submitting a DNA sample some found connections to Rice families now living in the southern United States. One Rice group member remains convinced that his ancestors came from Ireland but can only document through YDNA a location in Pennsylvania.

Because we now have definite YDNA evidence for a much larger number of Rice families than many of us imagined possible just a few years ago it diminishes our hopes of finding definite connections to Rices in Great Britain or any European origin. However because of the nature of probability we know this could change with the next Rice submitting a DNA sample.

We do need more DNA submissions from overseas. We actually got one just about the same time as the descendant from the Welsh Rice clergyman but from the beginning he made clear that he was born in America and was living in southern England temporarily. He also was quite sure he was an Edmund descendant and YDNA proved that to be so.

A major problem is that it is very difficult to be able to document genealogies in Great Britain from the time of their 1841 census back to the 1630s. We, Edmund descendants, were very lucky in that genealogists found Original Parish Records in Stanstead and Glemsford, Suffolk, England dating to 1600s and earlier. Edmund's connection to Berkhamstead was well known to early genealogists and then in the 1930s there was a breakthrough via a tip from one genealogist to another to look at Stanstead and Glemsford records.

However, YDNA can change the chance that connections across the Atlantic are found. We just have to get many more DNA submissions from abroad. Because Edmund had parents for certain (that are unknown to us) his YDNA could very well turn up from descendants of his uncles or grandfather, etc. in his Rice line in England. Then too, that male Rice line could have died out.

Details of ERA DNA Projects are found at our web site, [edmund-rice.org](http://edmund-rice.org).

**DNA Project, Robert V. Rice**

[rvarre@verizon.net](mailto:rvarre@verizon.net)

## **The Family Thicket, Part XVIII**

### **John Chandler**

*This is the latest in a series of articles looking at the complex relationships among the descendants of Edmund Rice. Each article focuses on one early Massachusetts immigrant and his wife (or wives) and offspring and uncovers some of the ways in which the offspring are connected by marriage to the extended Rice family within a few generations. Many of the people mentioned here are included in our Association's database, but some of those are omitted even so from the on-line 6-generation descendancy report because the latter concentrates on Edmund Rice's descendants and ventures only as far afield as their spouses and spouses' parents.*

This article features William Goddard of Watertown. Unlike many of the colonists discussed in this series, he did not come during the peak of the "Great Migration," but rather arrived a generation later, in

1665. Indeed, Savage says of him that he came “later than most of the first people in the respective families that can claim to be the progenitors of the New England race.” Like Edmund Rice, he settled first at Watertown, but, unlike Edmund, he remained there quietly and seldom appeared in the public records of the time. Before his emigration, he was a citizen of London and a grocer. He married Elizabeth Miles and supposedly had six children born in London, but only three survived to come to the New World. After that, they had five more, for a total of eight who will be mentioned in this article. Like Edmund Rice, he was a solid citizen, being both a member of the church congregation and a freeman of the colony. He was also highly educated and was hired by the town to teach Latin (and probably other subjects). He died in 1691, and his widow survived him by only six years. Turning now to their children:

1. **William** (c1653-1708) married Leah Fisher and had four children. Even so, he barely managed to squeeze into the family thicket because three of the four children apparently died without issue. As it was, the connection came many years later when two of his great-great granddaughters (sisters) named Eunice and Lucy Hancock married two brothers, respectively James<sup>7</sup> and David<sup>7</sup> McElwain (Rebecca<sup>6</sup> Whitcomb, Thankful<sup>5</sup> Houghton, Thankful<sup>4</sup> White, Mary<sup>3</sup> Rice, Thomas<sup>2</sup>, Edmund<sup>1</sup>).

2. **Joseph** (1655-1728) married Deborah Treadway and had several children, among which two figure in our story. (A) Their son Robert had both a daughter Mehitabel who married Nathaniel<sup>4</sup> Moore (Grace<sup>3</sup> Rice, Thomas<sup>2</sup>, Edmund<sup>1</sup>) and (via son Elisha) a granddaughter Mehitabel, who married Benjamin<sup>5</sup> Heywood (Elizabeth<sup>4</sup> Moore, Grace<sup>3</sup> Rice, Thomas<sup>2</sup>, Edmund<sup>1</sup>). Observe that the second Mehitabel was the niece of the first and married the nephew of the first's husband. Note also that Benjamin<sup>5</sup> Heywood was the brother of Keziah<sup>5</sup>, who served as a link in *Thicket II*, part 5B. (B) Joseph's son John had a grandson Joseph who married Rebecca<sup>7</sup> Newton (Tyrus<sup>6</sup>, Gideon<sup>5</sup>, Bethiah<sup>4</sup> Rice, Daniel<sup>3</sup>, Edward<sup>2</sup>, Edmund<sup>1</sup>). These Newtons were descendants of immigrant Richard Newton (see *Thicket VIII*, part 2).

3. **Robert** (?-1716) married Elizabeth Shattuck and had one child before he died, a daughter Elizabeth. However, I cannot find any further trace of this daughter. I can only assume that she died young.

4. **Thomas** (1667-1667). No issue, obviously.

5. **Benjamin** (1668-1748) married Martha Palfrey and had a namesake son and grandson who contributed to the tangle by way of three grandchildren of Benjamin III. (A) Louisa Goddard married John Chandler<sup>8</sup> Knowlton (Mary<sup>7</sup> Brooks, Elijah<sup>6</sup>, Sarah<sup>5</sup> Drury, Thomas<sup>4</sup>, Rachel<sup>3</sup> Rice, Henry<sup>2</sup>, Edmund<sup>1</sup>). (B) Huldah Chandler Goddard married Charles Ira<sup>7</sup> Warren (Sarah<sup>6</sup> Prentice, Sarah<sup>5</sup> Rice, Joseph<sup>4</sup>, Phineas<sup>3</sup>, Joseph<sup>2</sup>, Edmund<sup>1</sup>). (C) William Holbrook married Adaline<sup>7</sup> Pratt (Sally<sup>6</sup> Rice, Daniel<sup>5</sup>, Joseph<sup>4</sup>, Phineas<sup>3</sup>, Joseph<sup>2</sup>, Edmund<sup>1</sup>). (In case you're wondering, I have not checked to see where the “Chandler” middle names came from. They may be related to my Chandler line, but there were quite a few different Chandler families in early Massachusetts.)

6. **Elizabeth** (1671-?), died young.

7. **Josiah** (?-1720), married Rachel Davis of Roxbury and had a number of children. There is some uncertainty about one child named William, asserted by the Goddard genealogy to have been Josiah's, but who may have been a nephew instead. I have chosen to accept that assertion for lack of evidence to the contrary. As you will see, this William was decidedly caught in the thicket. In any case, one other child, assuredly Josiah's, contributed her part as well. (A) William had a son Josiah (perhaps whence the assertion of William's parentage) whose son Gardner married Sophia<sup>6</sup> Rice (Samuel<sup>5</sup>, Abraham<sup>4</sup>, Jonathan<sup>3</sup>, Henry<sup>2</sup>, Edmund<sup>1</sup>). William also had a son James who married Hannah<sup>5</sup> Rice (Jacob<sup>4</sup>, Jacob<sup>3</sup>, Edward<sup>2</sup>, Edmund<sup>1</sup>), a daughter Rachel who married Asa<sup>5</sup> Howe (Rachel<sup>4</sup> Rice, Benjamin<sup>3</sup>, Edward<sup>2</sup>, Edmund<sup>1</sup>), a son Solomon who married Thankful<sup>6</sup> Bouker (Martha<sup>5</sup> Eager, Lydia<sup>4</sup> Woods, Lydia<sup>3</sup> Rice, Edward<sup>2</sup>, Edmund<sup>1</sup>), and a daughter Ruth who married Jacob<sup>5</sup> Rice (Jacob<sup>4</sup>, Jacob<sup>3</sup>, Edward<sup>2</sup>, Edmund<sup>1</sup>).

Perhaps I should mention here that Edward<sup>2</sup> Rice, who appears in so many of these lineages, served as the thicket link for Agnes Bent, as described in *Thicket XII*, part 4. (B) Josiah's daughter Rachel in turn had a daughter Rachel Coolidge who married Seth<sup>5</sup> Rice (Seth<sup>4</sup>, Edmund<sup>3</sup>, Samuel<sup>2</sup>, Edmund<sup>1</sup>). After the younger Rachel's death, Seth<sup>5</sup> in turn married yet another descendant of Edmund Rice: Sarah<sup>6</sup> Brigham, who had two different lines of descent from Edmund (Jesse<sup>5</sup>, Jonathan<sup>4</sup>, Mary<sup>3</sup> Rice, Henry<sup>2</sup>, Edmund<sup>1</sup>) and (Bethiah<sup>4</sup>, Jacob<sup>3</sup>, Edward<sup>2</sup>, Edmund<sup>1</sup>). For the Brigham connection, see *Thicket II*.

8. **Edward** (1675-1754) married Susanna Stone and had four children who appear in our story. (A) Daughter Susannah married John<sup>4</sup> Drury (Rachel<sup>3</sup> Rice, Henry<sup>2</sup>, Edmund<sup>1</sup>). (B) Son Benjamin had a daughter Susanna who married Isaac<sup>6</sup> Stone (Rachel<sup>5</sup> Rice, Luke<sup>4</sup>, Daniel<sup>3</sup>, Edward<sup>2</sup>, Edmund<sup>1</sup>). (C) Son David married Mercy<sup>4</sup> Stone (Mary<sup>3</sup> Rice, Joseph<sup>2</sup>, Edmund<sup>1</sup>). (D) Son Ebenezer had a son Edward who married Ann<sup>6</sup> Death (Mercy<sup>5</sup> Pratt, Anna<sup>4</sup> Allen, Mercy<sup>3</sup> Rice, Henry<sup>2</sup>, Edmund<sup>1</sup>) and a son Ebenezer who married Hannah<sup>6</sup> Death (Mercy<sup>5</sup> Pratt, Anna<sup>4</sup> Allen, Mercy<sup>3</sup> Rice, Henry<sup>2</sup>, Edmund<sup>1</sup>). You might think that the Stones mentioned above were all related outside of the connections shown here, and indeed they were, but they are covered in two separate *Thicket* installments: *XV* and *XVII*.

As usual, these are just the most obvious connections. Of the eight children covered here, five had descendants who married Edmund Rice descendants, two died young, and one apparently had no descendants beyond a daughter. There is no end to the connections!

*Note: The previous articles in this series appeared as follows: I William Ward, Spring 2003; II Thomas Brigham, Fall 2003; III John How, Winter 2004; IV Daniel Forbush, Fall 2004; V John Fay, Winter 2005; VI Forbush (again), Spring 2005; VII Abraham How, Fall 2005; VIII Richard Newton, Winter 2006; IX John Moore, Spring 2006; Erratum, Fall 2006; X Joseph Morse, Winter 2007; XI Simon Willard, Spring 2007; XII John Bent, Fall 2007; XIII John Parmenter, Winter 2008; XIV Thomas King, Spring 2008; XV Simon Stone, Fall 2008; XVI Richard Newton (again), Winter 2009; XVII Gregory Stone, Spring 2009. I have six more Thicket articles in various stages of planning (Prescott, Chamberlain, Walker, and three different Goodenows). I would be glad to entertain suggestions for others.*

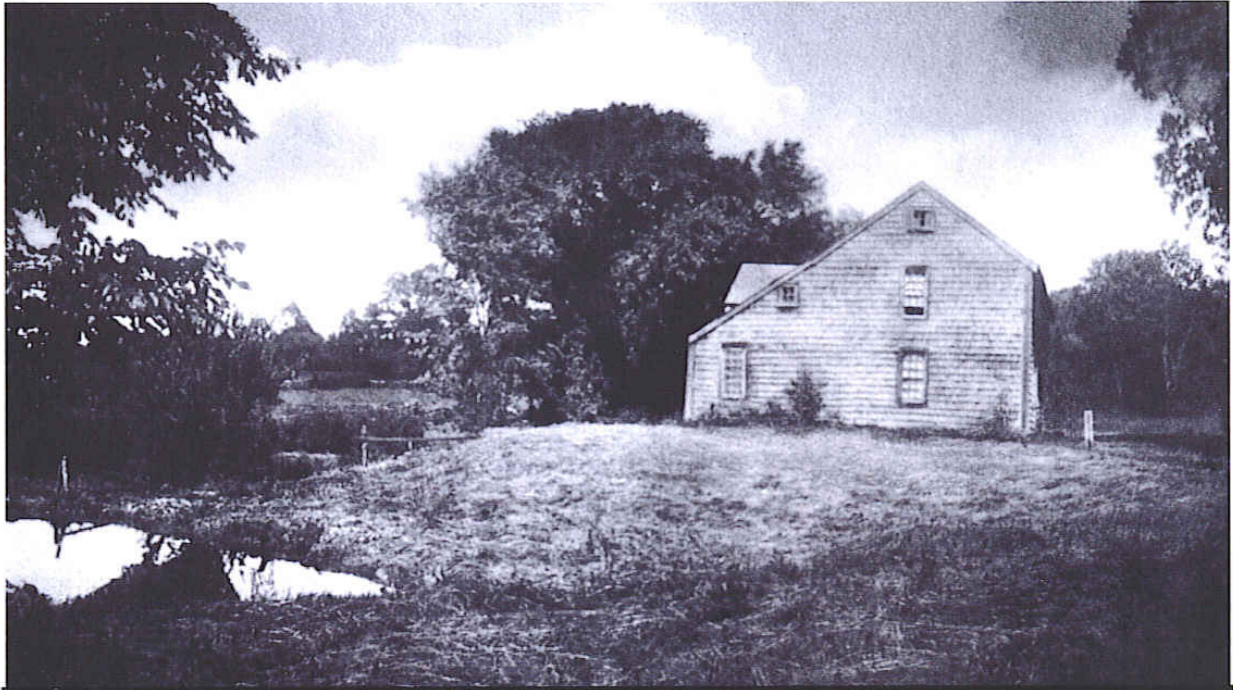
## REUNION PHOTOS

I'd like to share the following pictures some from previous reunions and some from the 2009 reunion.

The pictures on page 11 and the article on page 12 appeared in the Boston Daily Globe on September 14, 1913.

On September 13, 1913 about 150 descendants assembled at Wayland and dedicated the Boulder to Edmund Rice. (This is the same boulder we saw on our bus tour at Wayland cemetery).





The Old Rice House was erected near the Spring by Deacon Edmund Rice who came from Buckinghamshire, England in 1638. He named the town Sudbury, after his old home town in England. He was a petitioner for the incorporation of Marlborough in 1656. He died there on 3 May 1663. The house is gone and the property is now part of the town of Wayland. On 13 September 1913, a monument was erected on the site by his descendants.



## 1913 RICE FAMILY REUNION

The second annual reunion of the Edmund Rice (1638) Association was held on September 13, 1913 in this town and about 150 of the descendants took part in the program. In the morning a marker was unveiled near the old homestead on the Connecticut Path. A basket lunch was served.

The program at the old homestead opened with prayer by Rev. J.H. Hoffman, after which there were remarks by Fred N. Rice. The presentation to the town was made by Mrs. Nellie Rice Fiske of Cochituate. The boulder was unveiled by Joseph Rice and gift was accepted for the town by Selectman Paul T. Draper. The program closed with the singing of "America" by the assemblage.

The exercises at the church opened at 2 with prayer by Rev. Hoffman. The address of welcome was delivered by President E. B. Rice of Newton. Papers were read by Prof. G. H. Barton of Boston, M. R. Rice of Arlington, Rev. J. H. Hoffman and J. E. Rice. Vocal selections by Dr. and Mrs. G. B. Rice added to the pleasure of the occasion.

Officers were elected as follows: J. E. Rice, Marlboro, President; Mrs. Nellie Rice Fiske, Cochituate; Rev. J. F. Hoffman, Northboro; M. E. Rice, Vice President; F. H. Rice Brighton, Treasurer; Leslie O. Rice, Warren, O. secretary; Prof. G. H. Barton, Boston, Historian.

## 1940 RICE FAMILY REUNION

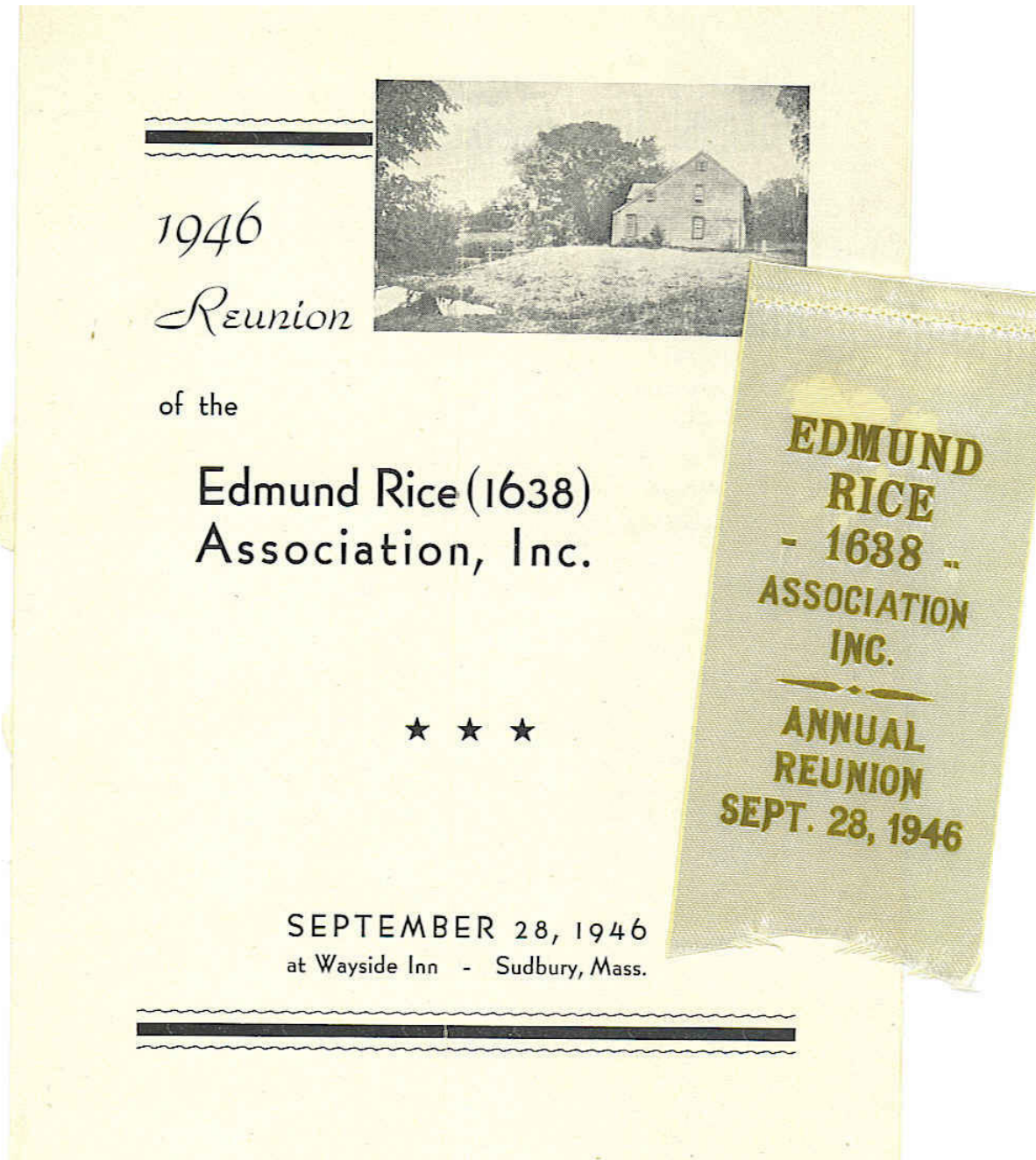


Edna Joslin Woodbury is a lifetime member and lives in Manchester, CT. Edna sent this picture and the reunion program on page 12. I'm sure she won't mind if I share her memories with you.

My husband and I have been in our house for fifty years and have been spending time since January cleaning out a 50 year collection of stuff. I'm including a snapshot from a pageant in the ballroom of the Wayside Inn, in which John E. Rice portrayed Edmund Rice, his wife was Elsie Hawes Smith and I, Edna Joslin Woodbury, was their daughter Lydia Rice. This photo was taken at the Rice Reunion held on September 28, 1940.



My mother was May Rice Joslin and as a child I we went to many of the Rice Reunions held at the Wayside Inn in Sudbury. If the association has someone who saves archival things, they might like the picture taken at the 1940 reunion and this program and ribbon from the 1946 reunion which I attended. I hope someone in the association will find a place to save these items.



The following pictures were taken at our Saturday Luncheon at the Clarion Inn in Sudbury



Amy Chapman, George King, John Chandler, George Rice and Beth McAleer



Guest Speaker, Diane Rapaport, author of The Naked Quaker





Wendy and Bob Wesen with granddaughter Melissa Felter and daughter Dorothy Wells



Martha Wood, Alice Pierce and Katrina Rice-Schmidt of Ojai, CA. with her brother Brian Rice of New York, NY, won prize for youngest member.





Dr. Robert Rice, Dana Hastings and his sister Alyce Hastings Rogers who traveled all the way from Medina, Washington to attend her very first Rice Reunion, won prize for traveling the farthest.



Jane Armbruster talking with Ruth Brown, who won prize as oldest cousin to attend the reunion

Life Member Ross W. McCurdy of Cape Cod, Massachusetts encourages members to research and publish family lines not currently getting the attention of Rice. In 2008 he did *Descendants of Samuel McCurdy of Surry, NH* with notes on siblings John of Lyme, CT and Ann of County Antrim, Northern Ireland, 3rd edition. Also out the *Descendants of Daniel Hazen, United Empire Loyalist*, 2nd edition, and *Descendants of John Stilwell, United Empire Loyalist*, a Work in Progress to the 6th Generation, 2nd edition.

2009 brings *Descendants of Henry Louks of Highgate, Vermont*, with all other lines of the name from Vermont & Quebec, 3rd edition. With the number of Rice descendants scattered over the continent and beyond, it's likely that a few will be found in the pages of the above volumes. These publications are part of a larger project - to research, compile and publish the descendants to the 7th generation of each known pair of gggg grandparents. We each have 32 sets unless, of course, cousins had a close affinity for each other, in which case there will be duplicates.

Barbara Story Kennedy of Junction City, Kansas provided her lineage to Edmund Rice. Barbara is an IT specialist retired from the Department of the Army. Barbara Story Kennedy is the second of two daughters born to Virgil and Edna Story.

Edmund Rice m Thomasine Frost  
Joseph Rice m Sarah Prescott  
Jonathan m Anna Derby  
William Rice m Mary Estabrook  
Charles Rice m Susannah Moore  
Josiah Rice m Ursula Hecox  
Levi Rice m Nancy Burroughs  
Josiah Burroughs Rice m Rebecca Ervin  
Emerson Story m Nancy Ann Rice  
Virgil Rice Story m Edna Beatty

## QUERIES

### 1) Carol Kosicki wrote:

I am a descendant of Edmund Rice via Lois Dadman and Issac Howe who both died and buried in Holliston, MA. I just stumbled upon the ERA website. I am interested in contributing my genealogy information.

I've forwarded your name and email information to our historian George King. We are so pleased you joined our association.

Susan Berger, Membership Chair and Newsletter Editor

### 2) Jim Murphy wrote:

I'm doing the genealogy work for our family and have been working on my wife's side of the family. She, Donna McCalla Murphy, is directly descended from Lydia Jane Rice who married Charles Wellington Mann in 1868 in Michigan. We suspect that Lydia Jane Rice is the daughter of Ezekial Rice/Betsey Lovewell.

I came across the Edmund Rice (1638) Association Newsletter Spring 2009 while surfing for more on the Rice family. Looks like your organization may have all the ancestry and documentation needed but I would like to have an idea of the kind of information available to be sure that it is real source



documentation with pretty good credibility before I join. I also saw that there is documentation that can be purchased by members. I would likely be very interested in some of that documentation also.

Looking forward to hearing from you soon. Thank you very much, Jim Murphy

Jim,

We have your Frederick Jasper McCalla, b 28 Jan 1910, Pinconning, MI, m Ann Barbara Lorbieche. We have nothing more about their marriage or offspring. Our 9-generation CD will have Prudence Ann Mann and Daniel Leslie McCalla as the most recent generations in your wife's ancestry.

As for authority, your wife's line is documented only to our Rice association publications back to the late 18th century. However, we have confirmed the family since 1860 with the US census.

If you will go to our web pages and click on the Genealogy link, then search for Gardiner Rice, b 1767, you can follow your wife's line back to Edmund Rice. The 9-generation CD is in identical format but includes through the 9th generation.

We welcome your membership as a sign of encouragement for we who devote much volunteer time to maintaining and adding to our association records. If you are comfortable using PayPal you can join on line. Otherwise your check will be welcome.

I can prepare a GEDCOM file of the ancestry of your Frederick Jasper McCalla that you can import to FTM. The import may not be perfect in that earlier versions of FTM did not recognize that every event can have a memo field. I do not know if this deficiency is corrected in FTM 2009 or 2010.

George W. King, Historian Edmund Rice (1638) Association

Hello George,

I have decided to join the ERA and will likely be purchasing the CD and probably the books for our genealogy library. It is really exciting to be able to document the ancestry of my wife. We are very certain of all of her ancestors back to Lydia Jane Rice so this will really be a great addition to her ancestry history.

My wife is Donna McCalla daughter of Frederick Jasper McCalla and Ann B Lorbiecki granddaughter of Daniel Leslie McCalla and Prudence Ann Mann great granddaughter of Benjamin McCalla and Delphonia Erway great granddaughter of Charles Wellington Mann and Lydia Jane Rice. We had expectations that Ezekiel Woodward Rice was the next level of ancestry on the Rice side and because of the closeness of neighbors in the census of that time with Charles Wellington Mann and Lydia to both Ezekiel Rice and Azariah Mann that we were quite sure that Lydia was indeed the daughter of Ezekiel. Then when looking for leads from various family trees out there on Ancestry.com, found leads to the ERA.

I do use Family Tree Maker 2009 (considering going to 2010 which seems to be just coming out) for keeping track of our family history. My father had done tremendous research on the Murphy ancestors (before the advantages of the internet), which I've incorporated into FTM and then started on Donna's side where very little had been done. How best can I use the CD and Rice Family Books?

Thanks, Jim Murphy

### 3) Robert wrote:

My aunt Ina told me as a child that the Rice side of my family had many famous people. The information went in one ear and out the other. Recently another aunt who had collected many of my aunt's things after she died gave me a genealogy map of my Rice ancestry. I started to research some of the history after my mother-in-law encouraged me to do so. I would like to know what I need to do join the society.

I am interested in the genetic testing to verify that I am related to Edmund and to confirm a belief that I am part American Indian. What information do you need from me to get started?

Robert Lehr

Robert,

We would like to exchange more detailed information with you. If you will give me a brief description of your line back to Edmund Rice I will be able to determine your most recent ancestor in our association records. With that information I can suggest how we can exchange information. What genealogy computer program are you using to keep your family records?

I have a file from a cousin who has tracked the Rice ancestry of a number of famous people. When I began working with the file I had difficulty authenticating some of the lines. That made me apprehensive as we have experience with some bad genealogy done with more "wanna be descended from" than "wanna be correct."

You may know that we have an active program to document the Kanawauga Mohawk Indians who are descended from Edmund Rice. In the 18th, 19th and early 20th centuries they were in the Mohawk communities in upper New York State and Quebec. Male Rices in the community near Montreal have tested positive for the reconstructed Edmund Rice YDNA. Fortunately the Jesuit church records are quite complete, but a challenge to interpret. We have no other active programs for American Indians or Canadian First Nation people. Looking forward to a mutually beneficial information exchange,

George W. King, Historian, Edmund Rice (1638) Association

Robert,

These are two separate matters. Our DNA project works with the DNA on the Y chromosome, which is passed down only from father to son and is therefore normally tied to the surname of males in the family. Since you are a Lehr, rather than Rice, your DNA will not serve the purpose -- your Y DNA came from your paternal ancestors all the back in the male line. Thus, you would need to recruit your closest male Rice relative to be your "proxy" for the purpose of establishing your line's relationship to Edmund.

Regarding your possible American Indian ancestry, the two key questions are: how far back is it, and on which line or lines? If it so happens that your unbroken male line goes straight back to a full-blooded male American Indian, then you're in luck -- you can test your Y chromosome and establish whether it is American or European. Similarly, if your mother's unbroken female line goes straight back to a full-blooded female American Indian, you can test your mitochondrial DNA (which you got from your mother) and determine whether it is American or European. Otherwise, if your Indian heritage is not obvious from photographs of one or more of your grandparents, then DNA won't give you a clear-cut answer either. There are commercial testing labs that will test a variety of markers in your DNA and speculate about where in the world you have "affinities", but this is very unscientific, despite the advertising. Your best bet would be to recruit the nearest relative who has the required unbroken male line or unbroken female line back to the full-blooded American Indian and do the testing by proxy.

Regarding information: if you give us a quick rundown on your descent from Edmund Rice, we can identify the point where our information already on hand leaves off. For that matter, perhaps you already know where that point is if you have explored the descendancy report on-line at our web site <http://edmund-rice.org>. In any case, if you are entering the information from your aunts into a genealogy software package, we would be very much interested in getting a copy of your data when you're finished.

John Chandler, President, Edmund Rice Association

**4)** Dear Sir or Madam,

I have just now used your website to arrange a new membership in the Association, and I am sure that our collective family would be interested in researching the possibility that we may be descended from Deacon Edmund.

I am George Edgar Rice of Philadelphia, PA., and I happened across the Association website online in connection with Oliver Rice, the Revolutionary War veteran. The name Oliver was borne both by my father and by a great-uncle, which seems more than coincidental. My grandfather was Edgar Rice, who settled in Cumberland, MD in Allegany County. His father, I believe, was named Donald. Our family's maternal surnames include England and Ridgeway.

Many thanks and best wishes,  
Edgar Rice

Edgar,

I have looked in my copy of the database and did not find a pair of Rice brothers named Edgar and Oliver (as first names). However, our Historian, George King, may have more. If you can furnish some dates, it might help. Also, our Newsletter Editor, Susan Berger, can publish a query for you to reach a wider audience.

The database can be ordered from our Treasurer, Mike Rice, who is also the custodian of a supply of books on Rice genealogy that were published before the electronic age (in other words, much of the material in these books has not yet been entered into the database, particularly for the most recent generations).

One thing you can do in parallel with the research into books and databases is to "look within yourself". Since the Y chromosome is passed down from father to son in the same way as a surname, your DNA is a link to your direct line of Rice ancestors. We are conducting a DNA study of Rices worldwide (see the web site), and you should be able to discover, via a straightforward test, which of the many identified Rice lines is connected to yours. If your line does indeed connect with Deacon Edmund Rice, there might even be a clue as to how it connects.

Please consider attending the next annual meeting of the Association, to be held Sep. 18-19 in Sudbury, Mass. Details will be published in the next issue of the newsletter.

John Chandler, President, Edmund Rice Assn

**5)** Brenda wrote:

I only recently found out about your organization. I am descended from Hugh Drury and Lydia Rice. Your site has my lineage down through Lawson Drury, Son of John Drury and Martha Rice.

I have been unsuccessful so far on finding much documentation on Lawson Sr and his son John Drury, my direct ancestors, my line picks up with John Augustus Drury and his wife Margaret Julia Curry. I have their birth/death dates from their headstones as well as family history files that are not confirmed. They were my great grandparents, so I have more information from there on down. Would my records be of any use to you with me not having documentation on those 2 generations?

Thanks, Brenda Drury

Hi Brenda,

As you learned from our association web pages we have only the birth of your Lawson Rice, cited to the published vital records of Shrewsbury, MA. The 1800 US census suggests that he was at Haverhill, Grafton County, NH at that time. The index to the 1820 US census is silent about a Lawson Drury.

Indeed we would like to exchange more detailed information with you. We can begin an exchange by preparing a report of the Rice ancestry of Lawson Drury as the information appears in our association database. The report will be in Microsoft Word, reverse journal format.

Are you keeping your family records in a genealogy computer program? What program? With many demands on my time it's not very smart to use my time to enter information from paper records. Would you be willing to share a copy of your computer records?

As for your concern about documentation we do not require proof from primary records. We do, however, consult and cite the US census from 1860 to 1920 to add confidence to family lines. Looking forward to a mutually beneficial information exchange,

George W. King, Historian Edmund Rice (1639) Association

6) Jael wrote:

Dear Historian,

I am trying to discover who the wife of Jonas Pratt was. It is said in the Pratt Directory that his wife was Ann, possibly Rice = as they named a son Rice.

This is a major stretch, with no documentation at all, just = brainstorming in case you know something that hasn't been published on = the web site yet:

Ebenezer Rice b. May 1, 1671 (Benjamin, Edmund) m. Bethia Williams and = had a daughter, Ann, b. Jan. 26, 1716/17, Sudbury, MA. I have not been = able to find anything, anywhere on Ann Rice. Jonas Pratt was b. about 1715 = in Oxford, MA. His father, Jonathan, was b. in Framingham, MA. By any chance, do you know anything more about my mystery Ann?

Thank you for your time and patience, Jael Raymond

Jael,

The Ann Rice you refer to is "unaccounted for" as far as I know. That is to say, we have her birth and only one item of further information: she was living as of 1723, when her father wrote his will. As you say, she is a mystery. I am forwarding your query to the newsletter editor and the historian. Please let us know if you find anything definite.

John Chandler President, Edmund Rice Association

7) Donald Peirce wrote:

Recently at the reunion I had the pleasure of meeting you while in the company of George King. My input to the conversation regarded the difficulties families, such as mine, have had in retaining the lessons learned from fathers and grandfathers regarding the spelling and pronouncement of our name. (PEIRCE -- PURSE). George and Susan graciously told me they would publish the following in the fall newsletter.

From Wikipedia, the free encyclopedia: "i before e, except after c" is a mnemonic devise devised to help students remember how to spell certain words in the English language. It means that, in words where i and e fall together, the order is ie, except directly following c, when it is ei:

ie in words like siege, friend, thief

ei in words like ceiling, receive

However, the rule, in its short form as above, has many common exceptions, such as species, science, sufficient, ancient (where ie follows c) or seize, weird, weight, sovereignty, vein, feisty, kaleidoscope and neighbor (where ei is not preceded by c). Various augmentations to the rhyme have been proposed to handle these exceptions. In June 2009, the British government advised primary school teachers to stop teaching the rule. Another version, particularly common in Britain is:

When the sound is ee; it's i before e except after c

Or

In ei and ie

When sounded like e

Put i before e except after c

## Rice Books Available

**The Rice Family**, by Andrew Henshaw Ward [\$5] 110 pages

Hard-cover reprint. New, unused. A genealogical history of descendants of Deacon Edmund Rice who came from Berkhamstead, England, and settled in Sudbury, Massachusetts, in 1638. 379 pages. Includes a soft-cover supplement (1967) containing additions and corrections.

**The Rice Family, Supplement 2 (Part 1)** [\$7] 224 pages

Supplement Number 2 (Part 1) to *The Rice Family*, compiled by Margaret S. Rice (1983). Hard-cover reprint. New, unused. Additional lines of descent through the first eight generations, which were unknown at the time of publication of *The Rice Family* and the 1967 supplement.

**The Rice Family, Supplement 2 (Part 2)** [\$8] 720 pages

Supplement Number 2 (Part 1) to *The Rice Family*, compiled by Margaret S. Rice (1985). Hard-cover reprint. New, unused. A continuation of *The Rice Family Supplement 2 (Part 1)* from the ninth generation to the present (1985).

**Edmund Rice and His Family and We Sought the Wilderness** [\$5] 357 pages

Two manuscripts in one binding. Hard-cover reprint 1986, new, unused.

*Edmund Rice and His Family*, by Elsie Hawes Smith (1938). A historical narrative about the early days of the Rices, it contains much genealogical information, as well as being a charming story.

*We Sought the Wilderness*, by Rev. Claton Rice (1949). A historical narrative based on those Rices who pushed westward to the prairies after short stays in New Hampshire and Vermont.

## More Books... by our cousins

**Frederic A. Wallace**, Framingham's Town Historian, is the author of "**Ancestors and Descendants of the Rice Brothers of Springfield, Mass.:** David Rice, William Marsh Rice, Caleb Hall Rice, Frederick Allyn Rice, Seven Generations – 1704 to 2004". This is a serious genealogy and history of the family descended from David Rice, who first appeared in the records of Milton and Weymouth, Mass., around 1725. Special attention is given to four brothers, born in Springfield, Mass., who went to Texas in the early to mid 1800's to seek their fortunes. One, William Marsh Rice, became the founder of Rice University in Houston. Their story is a classic example of a family torn apart by the Civil War. DNA evidence, obtained through the ERA's Rice Family DNA Project, is presented to resolve longstanding questions about the origins of this line. From the author, \$30 (includes postage to the continental US): Frederic A. Wallace, 53 Eaton Road, Framingham, MA 01701

**Mildred L. Henschel** is the author of **Lickiss Families and English Ancestors** consists of 292 pages and is spiral-bound with laminated covers. It consists of 3 parts: the first is English Ancestors, which includes Rice, Towne, Ball, Boland, Bullard, Mellen, Southworth, Whale, French, Fox, Frost, Moore, and Hancock. The second part starts with Hancock-- Sarah Jane who married the first John Lickiss to come to America and their descendants. The 3rd part consists of other Lickiss families, and includes a Table of Contents and Index. Price is \$45, postage and handling included. Mailing address is: 835 Valentine Dr., Dubuque, IA. 52003-0211



EDMUND RICE ASSOCIATION, INC.

Susan R. Berger  
ERA Membership Chair  
416 Shirley Place  
Valdosta, GA 31605-6422

Dear Cousins,

It's that time again, please check your membership card—if your membership date is "year ending September 1, 2009", then your membership has expired.

**If you have already paid your 2010 dues THANK YOU!**

***If resigning, remove me from active membership roles:***

---

The Edmund Rice Association has an informal renewal process, just fill out this form and send with dues.

Annual dues payable by September 1	\$ _____
Additional voluntary contribution	\$ _____
Total	\$ _____

The schedule of dues is as follows:

Under age 80	\$15.00
Age 80 and above	\$5.00
Life membership (in a single payment)	\$200.00

***Dues rate is per person; there is no discount for spouse or children.***

*The Board of Directors voted to insert the "Additional Voluntary Contribution" line in an attempt to offset the erosion of our treasury due to the current low interest rates. Your additional contributions are appreciated.*

Birthday \_\_\_\_\_

Phone Number (\_\_\_\_\_) \_\_\_\_\_

Email address \_\_\_\_\_

Name \_\_\_\_\_

Address \_\_\_\_\_

City/Town/Province \_\_\_\_\_

State \_\_\_\_\_ Zip Code/Postal Code \_\_\_\_\_

Country (if not USA) \_\_\_\_\_

Please make your check/money order payable to The Edmund Rice Assn., Inc. and send to:

Susan R. Berger  
416 Shirley Place  
Valdosta, GA 31605-6422